

Anti-IL22RA1 antibody (16-230) (STJ112836)

GENERAL INFORMATION

Product Type	Primary antibodies
Applications	WB/ELISA
Host / Source	Rabbit
Reactivity	Human/Mouse/Rat

PRODUCT PROPERTIES

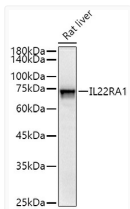
Clonality	Polyclonal
Concentration	Lot specific
Conjugation	Unconjugated
Purification	Affinity purification
Dilution Range	WB:1:500-1:1000 ELISA:Recommended starting concentration is 1 Mu g/mL. Please optimize the concentration based on your specific assay requirements.
Formulation	PBS with 0.02% Sodium Azide, 50% Glycerol, pH 7.3.
Isotype	IgG
Molecular Weight	Protein Mw: 63kDa Observed Mw: 68kDa
Storage Instruction	Store at -20°C for up to 1 year from the date of receipt, and avoid repeat freeze-thaw cycles.

TARGET INFORMATION

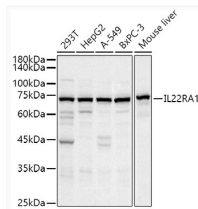
Gene ID	58985
Gene Symbol	IL22RA1
UniProt ID	I22R1_HUMAN
Immunogen Region	16-230
Immunogen Sequence	HAPEDPSDLLQHVKFKSSNF ENILTWDGSGPEGTPDVTYYSI EYKTYGERDWVAKKGCQRIT RKSCNLTVETGNLTLEYAR VTAVSAGGRSATKMTDRFSS LQHTTLKPPDVTICISKVRSI QMIVHPTPTPIRAGDGHRLT LEDIFHDLFYHLELQVNRTY QMHLGGKQREYEFFGLTPDT EFLGTIMICVPTWAKESAPY MCRVKTLPRDRTWTYS
Specificity	Recombinant fusion protein containing a sequence corresponding to amino acids 16-230 of human IL22RA1 (NP_067081.2).

ADDITIONAL INFORMATION

Note **STRICTLY FOR FURTHER SCIENTIFIC RESEARCH USE ONLY (RUO). MUST NOT TO BE USED IN DIAGNOSTIC OR THERAPEUTIC APPLICATIONS.**



Western blot analysis of extracts of Rat liver, using IL22RA1 antibody (STJ112836) at 1:500 dilution. Secondary antibody: HRP Goat Anti-Rabbit IgG (H+L) (STJS000856) at 1:10000 dilution. Lysates/proteins: 25 Mu g per lane. Blocking buffer: 3% nonfat dry milk in TBST. Detection: ECL Basic Kit. Exposure time: 30s.



Western blot analysis of extracts of various cell lines, using IL22RA1 antibody (STJ112836) at 1:500 dilution. Secondary antibody: HRP Goat Anti-Rabbit IgG (H+L) (STJS000856) at 1:10000 dilution. Lysates/proteins: 25 Mu g per lane. Blocking buffer: 3% nonfat dry milk in TBST. Detection: ECL Basic Kit. Exposure time: 10s.