

Anti-USP24 antibody (2431-2620) (STJ112599)

GENERAL INFORMATION

Product Type	Primary antibodies
Applications	WB/ELISA
Host / Source	Rabbit
Reactivity	Human/Mouse

PRODUCT PROPERTIES

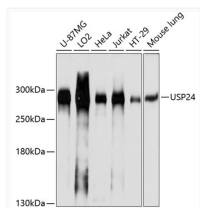
Clonality	Polyclonal
Concentration	Lot specific
Conjugation	Unconjugated
Purification	Affinity purification
Dilution Range	WB:1:500-1:1000 ELISA:Recommended starting concentration is 1 µg/mL. Please optimize the concentration based on your specific assay requirements.
Formulation	PBS with 0.01% Thimerosal, 50% Glycerol, pH 7.3.
Isotype	IgG
Molecular Weight	Protein Mw: 294kDa Observed Mw: 294kDa
Storage Instruction	Store at -20°C for up to 1 year from the date of receipt, and avoid repeat freeze-thaw cycles.

TARGET INFORMATION

Gene ID	23358
Gene Symbol	USP24
UniProt ID	UBP24_HUMAN
Immunogen Region	2431-2620
Immunogen Sequence	FTMLHFIKNQLETAPPHELK NTFQLLHEILVIEDPIQVER VKFVFETENGLLAMHHSNH VDSSRCYQCVKFLVTLAQKC PAAKEYFKENSHHWSWAVQW LQKKMSEHYWTPQSNVSNET STGKTFQRTISAQDTLAYAT ALLNEKEQSGSSNGSESSPA NENGDRHLQQGSESPMMIGE LRSDLDDVDP
Specificity	Recombinant fusion protein containing a sequence corresponding to amino acids 2431-2620 of human USP24 (NP_056121.2).

ADDITIONAL INFORMATION

Note STRICTLY FOR FURTHER SCIENTIFIC RESEARCH USE ONLY (RUO). MUST NOT TO BE USED IN DIAGNOSTIC OR THERAPEUTIC APPLICATIONS.



Western blot analysis of extracts of various cell lines, using USP24 antibody (STJ112599) at 1:1000 dilution. Secondary antibody: HRP Goat Anti-rabbit IgG (H+L) at 1:10000 dilution. Lysates/proteins: 25µg per lane. Blocking buffer: 3% non-fat dry milk in TBST. Detection: ECL Basic Kit. Exposure time: 1s.