

Anti-RAB13 antibody (1-203) (STJ112586)

GENERAL INFORMATION

Product Type	Primary antibodies
Applications	WB/IF/ICC/ELISA
Host / Source	Rabbit
Reactivity	Human

PRODUCT PROPERTIES

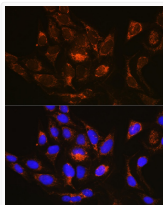
Clonality	Polyclonal
Concentration	Lot specific
Conjugation	Unconjugated
Purification	Affinity purification
Dilution Range	WB:1:1000-1:2000 IF/CC:1:50-1:200 ELISA:Recommended starting concentration is 1 Mu g/mL. Please optimize the concentration based on your specific assay requirements.
Formulation	PBS with 0.01% Thimerosal, 50% Glycerol, pH 7.3.
Isotype	IgG
Molecular Weight	Protein Mw: 23kDa Observed Mw: 23kDa
Storage Instruction	Store at -20°C for up to 1 year from the date of receipt, and avoid repeat freeze-thaw cycles.

TARGET INFORMATION

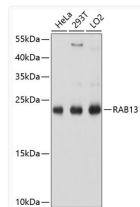
Gene ID	5872
Gene Symbol	RAB13
UniProt ID	RAB13_HUMAN
Immunogen Region	1-203
Immunogen Sequence	MAKAYDHLFKLLIGDSGVG KTCLIRFAEDNFNNTYIST IGIDFKIRTVDIEGKKIKLQ VWDTAGQERFKTITAYYRG AMGIILVYDITDEKSFENIQ NWMKSIKENASAGVERLLLG NKCDMEAKRKVQKEQADKLA REHGIRFFETSAKSSMNVD EAFSSLARDILLKSGGRRSGN GNKPPSTDLKTCDKKNTNKC SLG
Specificity	Recombinant fusion protein containing a sequence corresponding to amino acids 1-203 of human RAB13 (NP_002861.1).

ADDITIONAL INFORMATION

Note STRICTLY FOR FURTHER SCIENTIFIC RESEARCH USE ONLY (RUO). MUST NOT TO BE USED IN DIAGNOSTIC OR THERAPEUTIC APPLICATIONS.



Immunofluorescence analysis of U-2 OS cells using RAB13 Rabbit polyclonal antibody (STJ112586) at dilution of 1:100 (40x lens). Secondary antibody: Cy3 Goat Anti-Rabbit IgG (H+L) at 1:500 dilution. Blue: DAPI for nuclear staining.



Western blot analysis of various lysates using RAB13 Rabbit polyclonal antibody (STJ112586) at 1:1000 dilution. Secondary antibody: HRP Goat Anti-Rabbit IgG (H+L) (STJS000856) at 1:10000 dilution. Lysates/proteins: 25 Mu g per lane. Blocking buffer: 3% nonfat dry milk in TBST. Detection: ECL Basic Kit. Exposure time: 1s.