

Anti-LGR5 antibody (824-907) (STJ112563)

GENERAL INFORMATION

Product Type	Primary antibodies
Applications	WB/IHC-P/ELISA
Host / Source	Rabbit
Reactivity	Mouse/Rat

PRODUCT PROPERTIES

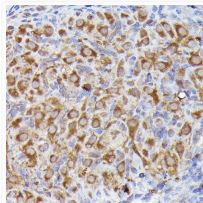
Clonality	Polyclonal
Concentration	Lot specific
Conjugation	Unconjugated
Purification	Affinity purification
Dilution Range	WB:1:1000-1:5000 IHC-P:1:100-1:500 ELISA:Recommended starting concentration is 1 μ g/mL. Please optimize the concentration based on your specific assay requirements.
Formulation	PBS with 0.09% Sodium Azide, 50% Glycerol, pH 7.3.
Isotype	IgG
Molecular Weight	Protein Mw: 100kDa Observed Mw: 100kDa
Storage Instruction	Store at -20°C for up to 1 year from the date of receipt, and avoid repeat freeze-thaw cycles.

TARGET INFORMATION

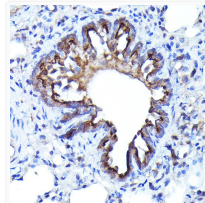
Gene ID	8549
Gene Symbol	LGR5
UniProt ID	LGR5_HUMAN
Immunogen Region	824-907
Immunogen Sequence	NPHFKEDLVSLRKQTYVWTR SKHPSLMSINSDDVEKQSCD STQALVTFTSSSITYDLPPS SVPSPAYPVTESCHLSSVAF VPCL
Specificity	Recombinant fusion protein containing a sequence corresponding to amino acids 824-907 of human LGR5/GPR49 (NP_003658.1).

ADDITIONAL INFORMATION

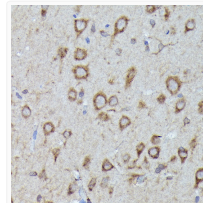
Note **STRICTLY FOR FURTHER SCIENTIFIC RESEARCH USE ONLY (RUO). MUST NOT TO BE USED IN DIAGNOSTIC OR THERAPEUTIC APPLICATIONS.**



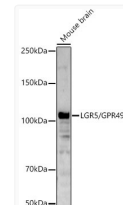
Immunohistochemistry analysis of LGR5/GPR49 in paraffin-embedded rat ovary using LGR5/GPR49 Rabbit polyclonal antibody (STJ112563) at dilution of 1:300 (40x lens). Perform high pressure antigen retrieval with 10 mM citrate buffer pH 6.0 before commencing with immunohistochemistry staining protocol.



Immunohistochemistry analysis of LGR5/GPR49 in paraffin-embedded rat lung using LGR5/GPR49 Rabbit polyclonal antibody (STJ112563) at dilution of 1:300 (40x lens). Perform high pressure antigen retrieval with 10 mM citrate buffer pH 6.0 before commencing with immunohistochemistry staining protocol.



Immunohistochemistry analysis of LGR5/GPR49 in paraffin-embedded rat brain using LGR5/GPR49 Rabbit polyclonal antibody (STJ112563) at dilution of 1:300 (40x lens). Perform high pressure antigen retrieval with 10 mM citrate buffer pH 6.0 before commencing with immunohistochemistry staining protocol.



Western blot analysis of lysates from Mouse brain using LGR5/GPR49 Rabbit polyclonal antibody (STJ112563) at 1:2000 dilution. Secondary antibody:HRP Goat Anti-Rabbit IgG (H+L) (STJS000856) at 1:10000 dilution. Lysates/proteins: 25 μ g per lane. Blocking buffer: 3% nonfat dry milk in TBST. Detection:ECL Basic Kit. Exposure time:60s.