

Anti-ADAM8 antibody (17-823) (STJ112521)

GENERAL INFORMATION

Product Type	Primary antibodies
Applications	WB/ELISA
Host / Source	Rabbit
Reactivity	Human/Mouse/Rat

PRODUCT PROPERTIES

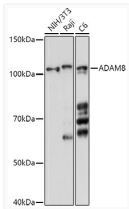
Clonality	Polyclonal
Concentration	Lot specific
Conjugation	Unconjugated
Purification	Affinity purification
Dilution Range	WB:1:500-1:1000 ELISA:Recommended starting concentration is 1 µg/mL. Please optimize the concentration based on your specific assay requirements.
Formulation	PBS with 0.09% Sodium Azide, 50% Glycerol, pH 7.3.
Isotype	IgG
Molecular Weight	Protein Mw: 89kDa Observed Mw: 100kDa
Storage Instruction	Store at -20°C for up to 1 year from the date of receipt, and avoid repeat freeze-thaw cycles.

TARGET INFORMATION

Gene ID	101
Gene Symbol	ADAM8
UniProt ID	ADAM8_HUMAN
Immunogen Region	17-823
Immunogen Sequence	IAPSRPWALMEQYEVLPWR LPGPRVRRALPSHLGLHPPER VSYVLGATGHNFTLHLRKNR DLLGSGYTETYTAANGSEVT EQPRGQDHCFYQGHVEGYPD SAASLSTCAGLRGFFQVGS LHLIEPLDEGGEGGRHAVYQ AEHLLQTAGTCGVSDDSLGS LLGPRTAAVFRPRPGDSLPS RETRYVELYVVVDNAEFQML GSEAAVRHRVLEVVNHVDKL YQKLNFRVVLVGLIEWNSQ
Specificity	Recombinant fusion protein containing a sequence corresponding to amino acids 17-300 of human ADAM8 (NP_001100.3).

ADDITIONAL INFORMATION

Note STRICTLY FOR FURTHER SCIENTIFIC RESEARCH USE ONLY (RUO). MUST NOT TO BE USED IN DIAGNOSTIC OR THERAPEUTIC APPLICATIONS.



Western blot analysis of extracts of various cell lines, using ADAM8 antibody (STJ112521) at 1:1000 dilution. Secondary antibody: HRP Goat Anti-Rabbit IgG (H+L) (STJS000856) at 1:10000 dilution. Lysates/proteins: 25 µg per lane. Blocking buffer: 3% nonfat dry milk in TBST. Detection: ECL Enhanced Kit. Exposure time: 180s.