

Anti-PRMT9 antibody (1-170) (STJ112515)

GENERAL INFORMATION

Product Type	Primary antibodies
Applications	WB/ELISA
Host / Source	Rabbit
Reactivity	Human

PRODUCT PROPERTIES

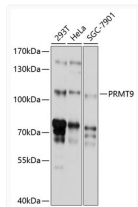
Clonality	Polyclonal
Concentration	Lot specific
Conjugation	Unconjugated
Purification	Affinity purification
Dilution Range	WB:1:1000-1:2000 ELISA:Recommended starting concentration is 1 Mu g/mL. Please optimize the concentration based on your specific assay requirements.
Formulation	PBS with 0.02% Sodium Azide, 50% Glycerol, pH 7.3.
Isotype	IgG
Molecular Weight	Protein Mw: 95kDa Observed Mw: 105kDa
Storage Instruction	Store at -20°C for up to 1 year from the date of receipt, and avoid repeat freeze-thaw cycles.

TARGET INFORMATION

Gene ID	90826
Gene Symbol	PRMT9
UniProt ID	ANM9_HUMAN
Immunogen Region	1-170
Immunogen Sequence	MSNSRPRSRRDAGGGGAGAAG RDELVSRSLQSAEHCLGVQD FGTAYAHYLLVLSLAPELKH DVKETFQYTLFRWAEELDAL SRIQDLLGCYEQALELFPDD EVICNSMGEHLFRMGFRDEA AGYFHKAVKLNPDFSDAKEN FYRVANWLVERWHFIMLNDT KRNTIYNAAI
Specificity	Recombinant fusion protein containing a sequence corresponding to amino acids 1-170 of human PRMT9 (NP_612373.2).

ADDITIONAL INFORMATION

Note STRICTLY FOR FURTHER SCIENTIFIC RESEARCH USE ONLY (RUO). MUST NOT TO BE USED IN DIAGNOSTIC OR THERAPEUTIC APPLICATIONS.



Western blot analysis of extracts of various cell lines, using PRMT9 antibody (STJ112515) at 1:1000 dilution. Secondary antibody: HRP Goat Anti-Rabbit IgG (H+L) (STJS000856) at 1:10000 dilution. Lysates/proteins: 25 Mu g per lane. Blocking buffer: 3% nonfat dry milk in TBST. Detection: ECL Basic Kit. Exposure time: 5s.