

## Anti-CYP2R1 antibody (252-501) (STJ112497)

### GENERAL INFORMATION

Product Type	Primary antibodies
Applications	WB/ELISA
Host / Source	Rabbit
Reactivity	Mouse/Rat

### PRODUCT PROPERTIES

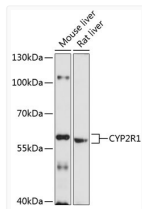
Clonality	Polyclonal
Concentration	Lot specific
Conjugation	Unconjugated
Purification	Affinity purification
Dilution Range	WB:1:500-1:2000 ELISA:Recommended starting concentration is 1 $\mu$ g/mL. Please optimize the concentration based on your specific assay requirements.
Formulation	PBS with 0.01% Thimerosal, 50% Glycerol, pH 7.3.
Isotype	IgG
Molecular Weight	Protein Mw: 57kDa Observed Mw: 57kDa
Storage Instruction	Store at -20°C for up to 1 year from the date of receipt, and avoid repeat freeze-thaw cycles.

### TARGET INFORMATION

Gene ID	<a href="#">120227</a>
Gene Symbol	<a href="#">CYP2R1</a>
UniProt ID	<a href="#">CP2R1_HUMAN</a>
Immunogen Region	252-501
Immunogen Sequence	VVYDFLSRLIEKASVNRKPKQ LPQHFVDAYLDEMDQGKNDP SSTFSKENLIFSVGELIAG TETTTNVLRWAILFMALYPN IQGQVQKEIDLIMGPNKGPS WDDKCKMPYTEAVLHEVLR CNIVPLGIFHATSEDAVVRG YSIPKGTTVITNLYSVHFDE KYWRDPEVFHPERFLDSSGY FAKKEALVPFSLGRRHCLGE HLARMEMFLFFTALLQRFHLL HFPHELVPDLKPRLGMTLQ
Specificity	Recombinant fusion protein containing a sequence corresponding to amino acids 252-501 of human CYP2R1 (NP_078790.2).

### ADDITIONAL INFORMATION

Note **STRICTLY FOR FURTHER SCIENTIFIC RESEARCH USE ONLY (RUO). MUST NOT TO BE USED IN DIAGNOSTIC OR THERAPEUTIC APPLICATIONS.**



Western blot analysis of various lysates using CYP2R1 Rabbit polyclonal antibody (STJ112497) at 1:1000 dilution. Secondary antibody: HRP Goat Anti-Rabbit IgG (H+L) (STJS000856) at 1:10000 dilution. Lysates/proteins: 25  $\mu$ g per lane. Blocking buffer: 3% nonfat dry milk in TBST. Detection: ECL Basic Kit. Exposure time: 15s.