

Anti-PHGDH antibody (264-533) (STJ112490)

GENERAL INFORMATION

Product Type	Primary antibodies
Applications	WB/IF/ICC/IP/ELISA
Host / Source	Rabbit
Reactivity	Human/Mouse/Rat

PRODUCT PROPERTIES

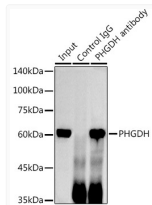
Clonality	Polyclonal
Concentration	Lot specific
Conjugation	Unconjugated
Purification	Affinity purification
Dilution Range	WB:1:500-1:1000 IF/CC:1:100-1:500 IP:0.5 Mu g-4 Mu g antibody for 200 Mu g-400 Mu g extracts of whole cells ELISA:Recommended starting concentration is 1 Mu g/mL. Please optimize the concentration based on your specific assay requirement
Formulation	PBS with 0.09% Sodium Azide, 50% Glycerol, pH 7.3.
Isotype	IgG
Molecular Weight	Protein Mw: 57kDa Observed Mw: 57kDa
Storage Instruction	Store at -20°C for up to 1 year from the date of receipt, and avoid repeat freeze-thaw cycles.

TARGET INFORMATION

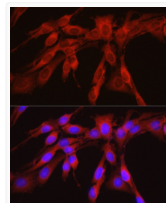
Gene ID	26227
Gene Symbol	PHGDH
UniProt ID	SERA_HUMAN
Immunogen Region	264-533
Immunogen Sequence	EEPPRDRALVDHENVISCPH LGASTKEAQSRCGEEIAVQF VDMVKGKSLTGVVNAQALTS AFSPHTKPWIGLAEALGTL M RAWAGSPKGTIQVITQGTSL KNAGNCLSPAVIVGLLKEAS KQADVNLVNAKLLVKEAGLN VTTSHSPAAPGEGGFGECLL AVALAGAPYQAVGLVQGTTP VLQGLNGAVFRPEVPLRRDL PLLLFRTQTS DPAMLPTMIG LLAEAGVRLLSYQTSLSVSD
Specificity	Recombinant fusion protein containing a sequence corresponding to amino acids 264-533 of human PHGDH (NP_006614.2).

ADDITIONAL INFORMATION

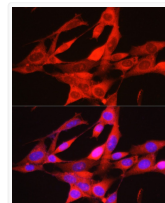
Note STRICTLY FOR FURTHER SCIENTIFIC RESEARCH USE ONLY (RUO). MUST NOT TO BE USED IN DIAGNOSTIC OR THERAPEUTIC APPLICATIONS.



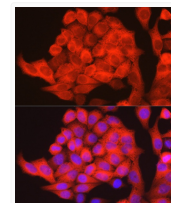
Immunoprecipitation analysis of 300 Mu g extracts of HeLa cells using 3 Mu g PHGDH antibody (STJ112490). Western blot was performed from the immunoprecipitate using PHGDH antibody (STJ112490) at a dilution of 1:1000.



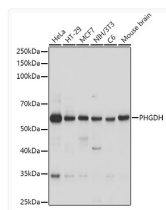
Immunofluorescence analysis of PC-12 cells using PHGDH Rabbit polyclonal antibody (STJ112490) at dilution of 1:300 (40x lens). Secondary antibody: Cy3 Goat Anti-Rabbit IgG (H+L) at 1:500 dilution. Blue: DAPI for nuclear staining.



Immunofluorescence analysis of NIH/3T3 cells using PHGDH Rabbit polyclonal antibody (STJ112490) at dilution of 1:300 (40x lens). Secondary antibody: Cy3 Goat Anti-Rabbit IgG (H+L) at 1:500 dilution. Blue: DAPI for nuclear staining.



Immunofluorescence analysis of HeLa cells using PHGDH Rabbit polyclonal antibody (STJ112490) at dilution of 1:300 (40x lens). Secondary antibody: Cy3 Goat Anti-Rabbit IgG (H+L) at 1:500 dilution. Blue: DAPI for nuclear staining.



Western blot analysis of various lysates using PHGDH Rabbit polyclonal antibody (STJ112490) at 1:1000 dilution. Secondary antibody: HRP Goat Anti-Rabbit IgG (H+L) (STJS000856) at 1:10000 dilution. Lysates/proteins: 25 Mu g per lane. Blocking buffer: 3% nonfat dry milk in TBST. Detection: ECL Basic Kit. Exposure time: 1s.