

## Anti-HAS1 antibody (80-390) (STJ112482)

### GENERAL INFORMATION

Product Type	Primary antibodies
Applications	WB/ELISA
Host / Source	Rabbit
Reactivity	Human/Mouse

### PRODUCT PROPERTIES

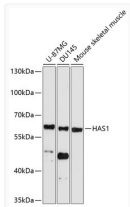
Clonality	Polyclonal
Concentration	Lot specific
Conjugation	Unconjugated
Purification	Affinity purification
Dilution Range	WB:1:500-1:2000 ELISA:Recommended starting concentration is 1 µg/mL. Please optimize the concentration based on your specific assay requirements.
Formulation	PBS with 0.02% Sodium Azide, 50% Glycerol, pH 7.3.
Isotype	IgG
Molecular Weight	Protein Mw: 65kDa Observed Mw: 65kDa
Storage Instruction	Store at -20°C for up to 1 year from the date of receipt, and avoid repeat freeze-thaw cycles.

### TARGET INFORMATION

Gene ID	<a href="#">3036</a>
Gene Symbol	<a href="#">HAS1</a>
UniProt ID	<a href="#">HYAS1_HUMAN</a>
Immunogen Region	80-390
Immunogen Sequence	RVAAAARGPLDAATARSVAL TISAYQEDPAYLRQCLASAR ALLYPRARLRVLMVVDGNRA EDLYMVDMFREVFADDPAT YVWDGNYHQPWEPAAAGAVG AGAYREVEAEDPGRLAVEAL VRTRRCVCVAQRWGGKREVM YTAFKALGDSVDYVQVCDSD TRLDPMALLELVRLDEDP VGAVGGDVRILNPLDSWVSF LSSLRYWVAFNVERACQSYF HCVSCISGPLGLYRNLLQ
Specificity	Recombinant fusion protein containing a sequence corresponding to amino acids 80-390 of human HAS1 (NP_001514.2).

### ADDITIONAL INFORMATION

Note **STRICTLY FOR FURTHER SCIENTIFIC RESEARCH USE ONLY (RUO). MUST NOT TO BE USED IN DIAGNOSTIC OR THERAPEUTIC APPLICATIONS.**



Western blot analysis of extracts of various cell lines, using HAS1 antibody (STJ112482) at 1:1000 dilution. Secondary antibody: HRP Goat Anti-Rabbit IgG (H+L) (STJS000856) at 1:10000 dilution. Lysates/proteins: 25 µg per lane. Blocking buffer: 3% nonfat dry milk in TBST. Detection: ECL Basic Kit. Exposure time: 30s.