

Anti-CD300C antibody (21-183) (STJ112452)

GENERAL INFORMATION

Product Type	Primary antibodies
Applications	WB/ELISA
Host / Source	Rabbit
Reactivity	Human/Mouse/Rat

PRODUCT PROPERTIES

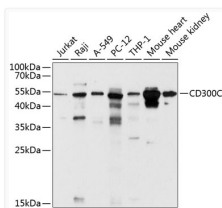
Clonality	Polyclonal
Concentration	Lot specific
Conjugation	Unconjugated
Purification	Affinity purification
Dilution Range	WB:1:500-1:2000 ELISA:Recommended starting concentration is 1 Mu g/mL. Please optimize the concentration based on your specific assay requirements.
Formulation	PBS with 0.02% Sodium Azide, 50% Glycerol, pH 7.3.
Isotype	IgG
Molecular Weight	Protein Mw: 25kDa Observed Mw: 52kDa
Storage Instruction	Store at -20°C for up to 1 year from the date of receipt, and avoid repeat freeze-thaw cycles.

TARGET INFORMATION

Gene ID	10871
Gene Symbol	CD300C
UniProt ID	CLM6_HUMAN
Immunogen Region	21-183
Immunogen Sequence	GYFPLSHPMTVAGPVGGSL S VQCRYEKEHRTL NKFWCRPP QILRCDKIVETKGSAGKRNG RVSIRDSPANLSFTVTLENL TEEDAGTYWCGVDTPWLRDF HDPIVEVEVSVFPAGTTTAS SPQSSMGTS GPPTKLPVHTW PSVTRKDSPEPSPHPGSLFS NVR
Specificity	Recombinant fusion protein containing a sequence corresponding to amino acids 21-183 of human CD300C (NP_006669.1).

ADDITIONAL INFORMATION

Note STRICTLY FOR FURTHER SCIENTIFIC RESEARCH USE ONLY (RUO). MUST NOT TO BE USED IN DIAGNOSTIC OR THERAPEUTIC APPLICATIONS.



Western blot analysis of extracts of various cell lines, using CD300C antibody (STJ112452) at 1:1000 dilution. Secondary antibody: HRP Goat Anti-Rabbit IgG (H+L) (STJS000856) at 1:10000 dilution. Lysates/proteins: 25 Mu g per lane. Blocking buffer: 3% nonfat dry milk in TBST. Detection: ECL Enhanced Kit. Exposure time: 30s.