

## Anti-MMP16 antibody (290-565) (STJ112444)

### GENERAL INFORMATION

Product Type	Primary antibodies
Applications	WB/IHC-P/IF/ICC/ELISA
Host / Source	Rabbit
Reactivity	Human/Mouse

### PRODUCT PROPERTIES

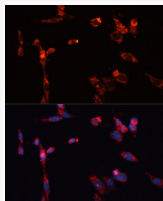
Clonality	Polyclonal
Concentration	Lot specific
Conjugation	Unconjugated
Purification	Affinity purification
Dilution Range	WB:1:500-1:1000 IHC-P:1:50-1:200 IF/CC:1:50-1:200 ELISA:Recommended starting concentration is 1 µg/mL. Please optimize the concentration based on your specific assay requirements.
Formulation	PBS with 0.09% Sodium Azide, 50% Glycerol, pH 7.3.
Isotype	IgG
Molecular Weight	Protein Mw: 70kDa Observed Mw: 70kDa
Storage Instruction	Store at -20°C for up to 1 year from the date of receipt, and avoid repeat freeze-thaw cycles.

### TARGET INFORMATION

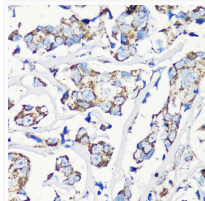
Gene ID	<a href="#">4325</a>
Gene Symbol	<a href="#">MMP16</a>
UniProt ID	<a href="#">MMP16_HUMAN</a>
Immunogen Region	290-565
Immunogen Sequence	YGGPDKIPPTRLPTVPPH RSIPPADPRKNDPRKPPRPP TGRPSYPGAKPNICDGNFNT LAILRREMVFVKDQWFWVRV NNRVMDGYPMQITYFWRGLP PSIDAVYENS DGNFVFFKGN KYWVFKDITLQPGYPHDLIT LGSGIPPHGIDSAIWVEDVG KTYFFKGDYRYWRYSEEMKTM DPGYPKPITVWKGIPESPQG AFVHKENGFTYFYKKGKEYWK FNNQILKVEPGYPRSLKD
Specificity	Recombinant fusion protein containing a sequence corresponding to amino acids 290-565 of human MMP16 (NP_005932.2).

### ADDITIONAL INFORMATION

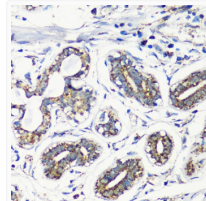
Note **STRICTLY FOR FURTHER SCIENTIFIC RESEARCH USE ONLY (RUO). MUST NOT TO BE USED IN DIAGNOSTIC OR THERAPEUTIC APPLICATIONS.**



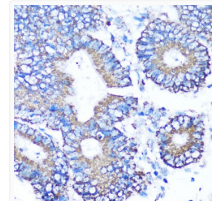
Immunofluorescence analysis of NIH/3T3 cells using MMP16 antibody (STJ112444) at dilution of 1:100. Blue: DAPI for nuclear staining.



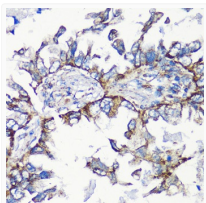
Immunohistochemistry analysis of paraffin-embedded human breast cancer using MMP16 antibody (STJ112444) at dilution of 1:100 (40x lens). Perform microwave antigen retrieval with 10 mM PBS buffer pH 7.2 before commencing with immunohistochemistry staining protocol.



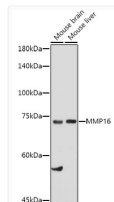
Immunohistochemistry analysis of paraffin-embedded human breast using MMP16 antibody (STJ112444) at dilution of 1:100 (40x lens). Perform microwave antigen retrieval with 10 mM PBS buffer pH 7.2 before commencing with immunohistochemistry staining protocol.



Immunohistochemistry analysis of paraffin-embedded human colon carcinoma using MMP16 antibody (STJ112444) at dilution of 1:100 (40x lens). Perform microwave antigen retrieval with 10 mM PBS buffer pH 7.2 before commencing with immunohistochemistry staining protocol.



Immunohistochemistry analysis of paraffin-embedded human lung cancer using MMP16 antibody (STJ112444) at dilution of 1:100 (40x lens). Perform microwave antigen retrieval with 10 mM PBS buffer pH 7.2 before commencing with immunohistochemistry staining protocol.



Western blot analysis of extracts of various cell lines, using MMP16 antibody (STJ112444) at 1:1000 dilution. Secondary antibody: HRP Goat Anti-Rabbit IgG (H+L) (STJS000856) at 1:10000 dilution. Lysates/proteins: 25 µg per lane. Blocking buffer: 3% nonfat dry milk in TBST. Detection: ECL Basic Kit. Exposure time: 90s.