

Anti-SLC29A3 antibody (1-110) (STJ112413)

GENERAL INFORMATION

Product Type	Primary antibodies
Applications	WB/ELISA
Host / Source	Rabbit
Reactivity	Human

PRODUCT PROPERTIES

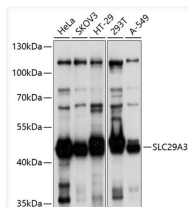
Clonality	Polyclonal
Concentration	Lot specific
Conjugation	Unconjugated
Purification	Affinity purification
Dilution Range	WB:1:500-1:2000 ELISA:Recommended starting concentration is 1 µg/mL. Please optimize the concentration based on your specific assay requirements.
Formulation	PBS with 0.02% Sodium Azide, 50% Glycerol, pH 7.3.
Isotype	IgG
Molecular Weight	Protein Mw: 52kDa Observed Mw: 50kDa
Storage Instruction	Store at -20°C for up to 1 year from the date of receipt, and avoid repeat freeze-thaw cycles.

TARGET INFORMATION

Gene ID	55315
Gene Symbol	SLC29A3
UniProt ID	S29A3_HUMAN
Immunogen Region	1-110
Immunogen Sequence	MAVVSDDDFQHSSNSTYRRT SSSLRADQEALLEKLLDRPP PGLQRPEDRFQCGTYIIFFSL GIGSLLPWNFITAKEYWMF KLRNSSPATGEDPEGSDIL NYFESYLAVA
Specificity	Recombinant fusion protein containing a sequence corresponding to amino acids 1-110 of human SLC29A3 (NP_060814.4).

ADDITIONAL INFORMATION

Note STRICTLY FOR FURTHER SCIENTIFIC RESEARCH USE ONLY (RUO). MUST NOT TO BE USED IN DIAGNOSTIC OR THERAPEUTIC APPLICATIONS.



Western blot analysis of extracts of various cell lines, using SLC29A3 antibody (STJ112413) at 1:1000 dilution. Secondary antibody: HRP Goat Anti-Rabbit IgG (H+L) (STJS000856) at 1:10000 dilution. Lysates/proteins: 25 µg per lane. Blocking buffer: 3% nonfat dry milk in TBST. Detection: ECL Basic Kit. Exposure time: 5s.