

Anti-ZC3H14 antibody (1-306) (STJ112401)

GENERAL INFORMATION

Product Type	Primary antibodies
Applications	WB/ELISA
Host / Source	Rabbit
Reactivity	Human/Mouse/Rat

PRODUCT PROPERTIES

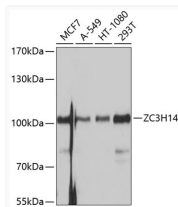
Clonality	Polyclonal
Concentration	Lot specific
Conjugation	Unconjugated
Purification	Affinity purification
Dilution Range	WB:1:500-1:2000 ELISA:Recommended starting concentration is 1 µg/mL. Please optimize the concentration based on your specific assay requirements.
Formulation	PBS with 0.02% Sodium Azide, 50% Glycerol, pH 7.3.
Isotype	IgG
Molecular Weight	Protein Mw: 83kDa Observed Mw: 105kDa
Storage Instruction	Store at -20°C for up to 1 year from the date of receipt, and avoid repeat freeze-thaw cycles.

TARGET INFORMATION

Gene ID	79882
Gene Symbol	ZC3H14
UniProt ID	ZC3HE_HUMAN
Immunogen Region	1-306
Immunogen Sequence	MRMSSKFPSPPLPIFLPPEP VDLGSITSSCSLNELDNIS HLLRKISADINEIKGMKAAI LTVEANLFDLNVRSKNEAK ISSLEVKMNEYSTTYECNRQ FEDQEEDTESQSRITDVKII GFLRNVEKGTQQRQLLSRLQ IDPVMAETLQMSQAEMSELS VAQKPEKLLERCKYWPACKN GDECAYHHPISPKAFPNCCK FAEKCLFVHPNCKYDAKCTK PDCPFTHVSRRIPLVLSPKP
Specificity	Recombinant fusion protein containing a sequence corresponding to amino acids 1-306 of human ZC3H14 (NP_997545.2).

ADDITIONAL INFORMATION

Note **STRICTLY FOR FURTHER SCIENTIFIC RESEARCH USE ONLY (RUO). MUST NOT TO BE USED IN DIAGNOSTIC OR THERAPEUTIC APPLICATIONS.**



Western blot analysis of various lysates using ZC3H14 Rabbit polyclonal antibody (STJ112401) at 1:1000 dilution. Secondary antibody: HRP Goat Anti-Rabbit IgG (H+L) (STJS000856) at 1:10000 dilution. Lysates/proteins: 25 µg per lane. Blocking buffer: 3% nonfat dry milk in TBST. Detection: ECL Basic Kit. Exposure time: 1s.