

Anti-CCDC61 antibody (352-531) (STJ112379)

GENERAL INFORMATION

Product Type	Primary antibodies
Applications	WB/ELISA
Host / Source	Rabbit
Reactivity	Human

PRODUCT PROPERTIES

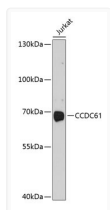
Clonality	Polyclonal
Concentration	Lot specific
Conjugation	Unconjugated
Purification	Affinity purification
Dilution Range	WB:1:500-1:2000 ELISA:Recommended starting concentration is 1 μ g/mL. Please optimize the concentration based on your specific assay requirements.
Formulation	PBS with 0.02% Sodium Azide, 50% Glycerol, pH 7.3.
Isotype	IgG
Molecular Weight	Protein Mw: 57kDa Observed Mw: 57kDa
Storage Instruction	Store at -20°C for up to 1 year from the date of receipt, and avoid repeat freeze-thaw cycles.

TARGET INFORMATION

Gene ID	729440
Gene Symbol	CCDC61
UniProt ID	CCDC61_HUMAN
Immunogen Region	352-531
Immunogen Sequence	PSPSPTGGRALRFDPTAFVK AKERKQREIQMKQQQRNRLG SGGSGDGPVSVWSRQTQPPA ALTGRGDAPNRSRNRSSVD SFRSRCSSASSCSDFSE SLSRGGHRRRGKPPSPTPWS GSNMKSPVVERSHHQKSLAN SGGWVPIKEYSSEHQADMA EIDARLKALQEYMNRLDMRS
Specificity	Recombinant fusion protein containing a sequence corresponding to amino acids 352-531 of human CCDC61 (NP_001073871.1).

ADDITIONAL INFORMATION

Note STRICTLY FOR FURTHER SCIENTIFIC RESEARCH USE ONLY (RUO). MUST NOT TO BE USED IN DIAGNOSTIC OR THERAPEUTIC APPLICATIONS.



Western blot analysis of extracts of Jurkat cells, using CCDC61 antibody (STJ112379) at 1:1000 dilution. Secondary antibody: HRP Goat Anti-Rabbit IgG (H+L) (STJS000856) at 1:10000 dilution. Lysates/proteins: 25 μ g per lane. Blocking buffer: 3% nonfat dry milk in TBST. Detection: ECL Basic Kit. Exposure time: 90s.