

## Anti-SLC26A6 antibody (509-758) (STJ112361)

### GENERAL INFORMATION

Product Type	Primary antibodies
Applications	WB/ELISA
Host / Source	Rabbit
Reactivity	Human

### PRODUCT PROPERTIES

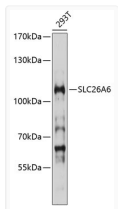
Clonality	Polyclonal
Concentration	Lot specific
Conjugation	Unconjugated
Purification	Affinity purification
Dilution Range	WB:1:500-1:2000 ELISA:Recommended starting concentration is 1 µg/mL. Please optimize the concentration based on your specific assay requirements.
Formulation	PBS with 0.02% Sodium Azide, 50% Glycerol, pH 7.3.
Isotype	IgG
Molecular Weight	Protein Mw: 83kDa Observed Mw: 110kDa
Storage Instruction	Store at -20°C for up to 1 year from the date of receipt, and avoid repeat freeze-thaw cycles.

### TARGET INFORMATION

Gene ID	<a href="#">65010</a>
Gene Symbol	<a href="#">SLC26A6</a>
UniProt ID	<a href="#">S26A6_HUMAN</a>
Immunogen Region	509-758
Immunogen Sequence	QMPHYSVLGQVPDIDIYRDV AEYSEAKEVRGVKVFRRSAT VYFANAEFYSDALKQRCGVD VDFLISQKKKLLKKQEQQLK KQLQKEEKLKQAASPKGAS VSINVNTSLEDMRSNNVEDC KMMVSSGDKMEDATANGQED SKAPDGLTKALGLPQPDFH SLILDGLSFDVTVCLKSL KNIFHDFREIEVEVYMAACH SPVVSQLEAGHFFDASITKK HLFASVHDAVTFALQHPRP
Specificity	Recombinant fusion protein containing a sequence corresponding to amino acids 509-758 of human SLC26A6 (NP_599025.2).

### ADDITIONAL INFORMATION

Note **STRICTLY FOR FURTHER SCIENTIFIC RESEARCH USE ONLY (RUO). MUST NOT TO BE USED IN DIAGNOSTIC OR THERAPEUTIC APPLICATIONS.**



Western blot analysis of extracts of 293T cells, using SLC26A6 antibody (STJ112361) at 1:1000 dilution. Secondary antibody: HRP Goat Anti-Rabbit IgG (H+L) (STJS000856) at 1:10000 dilution. Lysates/proteins: 25 µg per lane. Blocking buffer: 3% nonfat dry milk in TBST. Detection: ECL Basic Kit. Exposure time: 90s.