

Anti-LRIG1 antibody (816-1093) (STJ112335)

GENERAL INFORMATION

Product Type	Primary antibodies
Applications	WB/ELISA
Host / Source	Rabbit
Reactivity	Human/Mouse

PRODUCT PROPERTIES

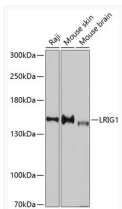
Clonality	Polyclonal
Concentration	Lot specific
Conjugation	Unconjugated
Purification	Affinity purification
Dilution Range	WB:1:1000-1:2000 ELISA:Recommended starting concentration is 1 Mu g/mL. Please optimize the concentration based on your specific assay requirements.
Formulation	PBS with 0.09% Sodium Azide, 50% Glycerol, pH 7.3.
Isotype	IgG
Molecular Weight	Protein Mw: 119kDa Observed Mw: 160kDa
Storage Instruction	Store at -20°C for up to 1 year from the date of receipt, and avoid repeat freeze-thaw cycles.

TARGET INFORMATION

Gene ID	26018
Gene Symbol	LRIG1
UniProt ID	LRIG1_HUMAN
Immunogen Region	816-1093
Immunogen Sequence	YQTRKKSEEYSVTNTDETVV PPDVPSYLSQGTLSDRQET VVRTEGGPQANGHIESNGVC PRDASHFPEPDTHSVACRQP KLCAGSAYHKEPWKAMEKAE GTPGPHKMEHGGRVVCSDCN TEVDCYSRGAQAFHPQVSRD SAQPSAPNGPEPGGSDQEHSH PHHQCSTRTAAGSCPECQGS YPSNHDRMLTAVKKKPMASL DGKGDSSWTLARLYHPDSTE LQPASLTSGSPERAEAQY
Specificity	Recombinant fusion protein containing a sequence corresponding to amino acids 816-1093 of human LRIG1 (NP_056356.2).

ADDITIONAL INFORMATION

Note **STRICTLY FOR FURTHER SCIENTIFIC RESEARCH USE ONLY (RUO). MUST NOT TO BE USED IN DIAGNOSTIC OR THERAPEUTIC APPLICATIONS.**



Western blot analysis of extracts of various cell lines, using LRIG1 antibody (STJ112335) at 1:3000 dilution. Secondary antibody: HRP Goat Anti-Rabbit IgG (H+L) (STJS000856) at 1:10000 dilution. Lysates/proteins: 25 Mu g per lane. Blocking buffer: 3% nonfat dry milk in TBST. Detection: ECL Enhanced Kit. Exposure time: 90s.