

Anti-CYFIP1 antibody (1-270) (STJ112329)

GENERAL INFORMATION

Product Type	Primary antibodies
Applications	WB/IP/ELISA
Host / Source	Rabbit
Reactivity	Human/Mouse

PRODUCT PROPERTIES

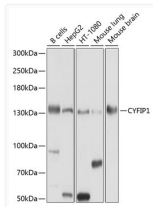
Clonality	Polyclonal
Concentration	Lot specific
Conjugation	Unconjugated
Purification	Affinity purification
Dilution Range	WB:1:1000-1:2000 IP:0.5 Mu g-4 Mu g antibody for 200 Mu g-400 Mu g extracts of whole cells ELISA:Recommended starting concentration is 1 Mu g/mL. Please optimize the concentration based on your specific assay requirements.
Formulation	PBS with 0.02% Sodium Azide, 50% Glycerol, pH 7.3.
Isotype	IgG
Molecular Weight	Protein Mw: 145kDa Observed Mw: 145kDa
Storage Instruction	Store at -20°C for up to 1 year from the date of receipt, and avoid repeat freeze-thaw cycles.

TARGET INFORMATION

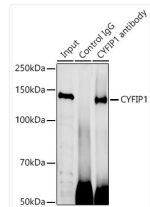
Gene ID	23191
Gene Symbol	CYFIP1
UniProt ID	CYFP1_HUMAN
Immunogen Region	1-270
Immunogen Sequence	MAAQVTLEDALSNVDLLEEL PLPDQQPCIEPPPSLLYQP NFNTNFEDRNAFVTGIARYI EQATVHSSMNEMLEEGQEYA VMLYTWRSRCSRAIPQVKCNE QPNRVEIYEKTVLEPEVT KLMNFMFYQRNAIERFCGEV RRLCHAERRKDFVSEAYLIT LGKFINMFAVLDELKNMKCS VKNDHSAYKRAAQFLRKMAD PQSIQESQNLMSFLANHNKI TQSLQQQLEVISGYEELLA
Specificity	Recombinant fusion protein containing a sequence corresponding to amino acids 1-270 of human CYFIP1 (NP_055423.1).

ADDITIONAL INFORMATION

Note **STRICTLY FOR FURTHER SCIENTIFIC RESEARCH USE ONLY (RUO). MUST NOT TO BE USED IN DIAGNOSTIC OR THERAPEUTIC APPLICATIONS.**



Western blot analysis of extracts of various cell lines, using CYFIP1 antibody (STJ112329) at 1:1000 dilution. Secondary antibody: HRP Goat Anti-rabbit IgG (H+L) (STJS000856) at 1:10000 dilution. Lysates/proteins: 25 Mu g per lane. Blocking buffer: 3% non-fat dry milk in TBST. Detection: ECL Basic Kit. Exposure time: 10s.



Immunoprecipitation analysis of 300 Mu g extracts of BT-474 cells using 3 Mu g CYFIP1 antibody (STJ112329). Western blot was performed from the immunoprecipitate using CYFIP1 antibody (STJ112329) at a dilution of 1:500.