

Anti-DUSP14 antibody (1-198) (STJ112325)

GENERAL INFORMATION

Product Type	Primary antibodies
Applications	WB/IF/ICC/ELISA
Host / Source	Rabbit
Reactivity	Human/Mouse/Rat

PRODUCT PROPERTIES

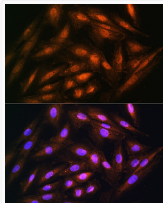
Clonality	Polyclonal
Concentration	Lot specific
Conjugation	Unconjugated
Purification	Affinity purification
Dilution Range	WB:1:200-1:2000 IF/CC:1:50-1:200 ELISA:Recommended starting concentration is 1 Mu g/mL. Please optimize the concentration based on your specific assay requirements.
Formulation	PBS with 0.02% Sodium Azide, 50% Glycerol, pH 7.3.
Isotype	IgG
Molecular Weight	Protein Mw: 22kDa Observed Mw: 22kDa
Storage Instruction	Store at -20°C for up to 1 year from the date of receipt, and avoid repeat freeze-thaw cycles.

TARGET INFORMATION

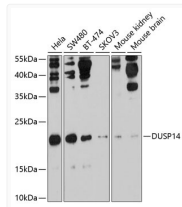
Gene ID	11072
Gene Symbol	DUSP14
UniProt ID	DUS14_HUMAN
Immunogen Region	1-198
Immunogen Sequence	MSSRGHSTLPRTLMAPRMIS EGDIGGIAQITSSLFLGRGS VASNRHLLQARGITCIVNAT IEIPNFNWPQFEYVKVPLAD MPHAPIGLYFDTVADKIHVS SRKHGATLVHCAAGVSRSAT LCIAYLMKFHNVCLEAYNW VKARRPVIRPNVGFWRQLID YERQLFGKSTVKMVMQTPYGI VPDVYEKESRHLMPYWGI
Specificity	Recombinant fusion protein containing a sequence corresponding to amino acids 1-198 of human DUSP14 (NP_008957.1).

ADDITIONAL INFORMATION

Note **STRICTLY FOR FURTHER SCIENTIFIC RESEARCH USE ONLY (RUO). MUST NOT TO BE USED IN DIAGNOSTIC OR THERAPEUTIC APPLICATIONS.**



Immunofluorescence analysis of H9C2 cells using DUSP14 Rabbit polyclonal antibody (STJ112325) at dilution of 1:100. Blue: DAPI for nuclear staining.



Western blot analysis of extracts of various cell lines, using DUSP14 antibody (STJ112325) at 1:1000 dilution. _Secondary antibody: HRP Goat Anti-Rabbit IgG (H+L) (STJS000856) at 1:10000 dilution. _Lysates/proteins: 25 Mu g per lane. _Blocking buffer: 3% nonfat dry milk in TBST. _Detection: ECL Enhanced Kit. _Exposure time: 30s.