

Anti-KIF14 antibody (1399-1648) (STJ112313)

GENERAL INFORMATION

Product Type	Primary antibodies
Applications	WB/IHC-P/IF/ICC/ELISA
Host / Source	Rabbit
Reactivity	Human/Mouse/Rat

PRODUCT PROPERTIES

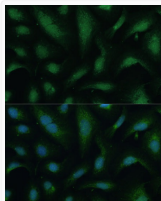
Clonality	Polyclonal
Concentration	Lot specific
Conjugation	Unconjugated
Purification	Affinity purification
Dilution Range	WB:1:1000-1:2000 IHC-P:1:50-1:200 IF/CC:1:50-1:200 ELISA:Recommended starting concentration is 1 Mu g/mL. Please optimize the concentration based on your specific assay requirements.
Formulation	PBS with 0.02% Sodium Azide, 50% Glycerol, pH 7.3.
Isotype	IgG
Molecular Weight	Protein Mw: 186kDa Observed Mw: 190kDa
Storage Instruction	Store at -20°C for up to 1 year from the date of receipt, and avoid repeat freeze-thaw cycles.

TARGET INFORMATION

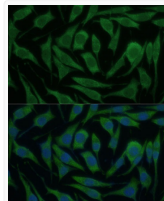
Gene ID	9928
Gene Symbol	KIF14
UniProt ID	KIF14_HUMAN
Immunogen Region	1399-1648
Immunogen Sequence	LENGNKAASVQEEFMDAVC DGVGLGMKILLDSGLEKAKE LQHELFRQCTKNEVTKEMKT NAMGLIRSLNIFAESKIKS FRRQVQEENFEYQDFKRMVN RAPEFLKCLKHCLEKAIEIII SALKGCHSDINLLQTCVESI RNLASDFYSDFSVPSTSVGS YESRVTHIVHQELESKLSL LFCFESEESPDLKWPWETYN QNTKEEHQQSKSSGIDGSKN KGVPKRVYELHGSSPAVSS
Specificity	Recombinant fusion protein containing a sequence corresponding to amino acids 1399-1648 of human KIF14 (NP_055690.1).

ADDITIONAL INFORMATION

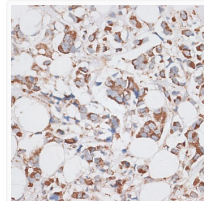
Note STRICTLY FOR FURTHER SCIENTIFIC RESEARCH USE ONLY (RUO). MUST NOT TO BE USED IN DIAGNOSTIC OR THERAPEUTIC APPLICATIONS.



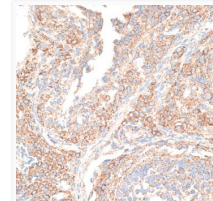
Immunofluorescence analysis of U-2 OS cells using KIF14 Polyclonal Antibody (STJ112313) at dilution of 1:100 (40x lens). Blue: DAPI for nuclear staining.



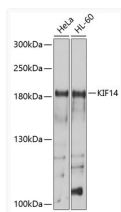
Immunofluorescence analysis of L929 cells using KIF14 Polyclonal Antibody (STJ112313) at dilution of 1:100 (40x lens). Blue: DAPI for nuclear staining.



Immunohistochemistry analysis of paraffin-embedded human breast cancer using KIF14 antibody (STJ112313) at dilution of 1:100 (40x lens). Perform microwave antigen retrieval with 10 mM PBS buffer pH 7. 2 before commencing with immunohistochemistry staining protocol.



Immunohistochemistry analysis of paraffin-embedded rat ovary using KIF14 antibody (STJ112313) at dilution of 1:100 (40x lens). Perform microwave antigen retrieval with 10 mM PBS buffer pH 7. 2 before commencing with immunohistochemistry staining protocol.



Western blot analysis of extracts of various cell lines, using KIF14 antibody (STJ112313) at 1:1000 dilution. Secondary antibody: HRP Goat Anti-Rabbit IgG (H+L) (STJS000856) at 1:10000 dilution. Lysates/proteins: 25 Mu g per lane. Blocking buffer: 3% nonfat dry milk in TBST. Detection: ECL Basic Kit. Exposure time: 15s.