

Anti-EIF3B antibody (100-350) (STJ112297)

GENERAL INFORMATION

Product Type	Primary antibodies
Applications	WB/IF/ICC/ELISA
Host / Source	Rabbit
Reactivity	Human/Mouse/Rat

PRODUCT PROPERTIES

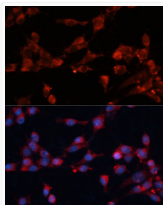
Clonality	Polyclonal
Concentration	Lot specific
Conjugation	Unconjugated
Purification	Affinity purification
Dilution Range	WB:1:1000-1:2000 IF/CC:1:50-1:200 ELISA:Recommended starting concentration is 1 Mu g/mL. Please optimize the concentration based on your specific assay requirements.
Formulation	PBS with 0.02% Sodium Azide, 50% Glycerol, pH 7.3.
Isotype	IgG
Molecular Weight	Protein Mw: 93kDa Observed Mw: 125kDa
Storage Instruction	Store at -20°C for up to 1 year from the date of receipt, and avoid repeat freeze-thaw cycles.

TARGET INFORMATION

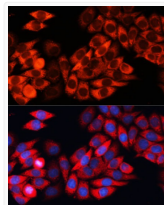
Gene ID	8662
Gene Symbol	EIF3B
UniProt ID	EIF3B_HUMAN
Immunogen Region	100-350
Immunogen Sequence	PVPAQGEAPGEQARDERSDS RAQAVSEADAGGNEGRAAEAE PRALENGDADEPSFSDPEDF VDDVSEEEELGDLVKDRPQE ADGIDSVIVVDNVPQVGPDR LEKLNVIHKIFSKFGKITN DFYPEEDGKTKGYIFLEYAS PAHAVDAVKNADGYKLDKQH TFRVNLFTDFDKYMTISDEW DIPEKQPFKDLGNLRYWLEE AECRDQYSVIFESGDRTSIF WNDVKDPVSIIEERARWTET
Specificity	Recombinant fusion protein containing a sequence corresponding to amino acids 100-350 of human eIF3B (NP_003742.2).

ADDITIONAL INFORMATION

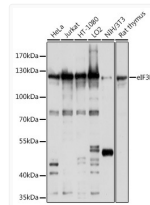
Note STRICTLY FOR FURTHER SCIENTIFIC RESEARCH USE ONLY (RUO). MUST NOT TO BE USED IN DIAGNOSTIC OR THERAPEUTIC APPLICATIONS.



Immunofluorescence analysis of NIH-3T3 cells using eIF3B Polyclonal Antibody (STJ112297) at dilution of 1:100 (40x lens). Blue: DAPI for nuclear staining.



Immunofluorescence analysis of HeLa cells using eIF3B Polyclonal Antibody (STJ112297) at dilution of 1:100 (40x lens). Blue: DAPI for nuclear staining.



Western blot analysis of extracts of various cell lines, using eIF3B antibody (STJ112297) at 1:1000 dilution. Secondary antibody: HRP Goat Anti-Rabbit IgG (H+L) (STJS000856) at 1:10000 dilution. Lysates/proteins: 25 Mu g per lane. Blocking buffer: 3% nonfat dry milk in TBST. Detection: ECL Basic Kit. Exposure time: 1s.