

Anti-SPG7 antibody (1-250) (STJ112287)

GENERAL INFORMATION

Product Type	Primary antibodies
Applications	WB/IHC-P/IF/ICC/ELISA
Host / Source	Rabbit
Reactivity	Human/Mouse/Rat

PRODUCT PROPERTIES

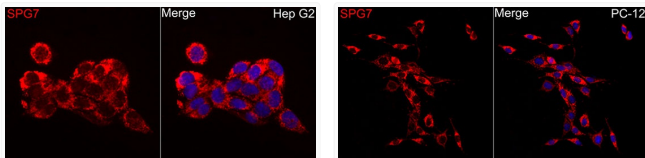
Clonality	Polyclonal
Concentration	Lot specific
Conjugation	Unconjugated
Purification	Affinity purification
Dilution Range	WB:1:1000-1:2000 IHC-P:1:50-1:200 IF/ICC:1:50-1:200 ELISA:Recommended starting concentration is 1 µg/mL. Please optimize the concentration based on your specific assay requirements.
Formulation	PBS with 0.02% Sodium Azide, 50% Glycerol, pH 7.3.
Isotype	IgG
Molecular Weight	Protein Mw: 88kDa Observed Mw: 88kDa
Storage Instruction	Store at -20°C for up to 1 year from the date of receipt, and avoid repeat freeze-thaw cycles.

TARGET INFORMATION

Gene ID	6687
Gene Symbol	SPG7
UniProt ID	SPG7_HUMAN
Immunogen Region	1-250
Immunogen Sequence	MAVLLLLLRALRRGPGFGPR PLWGFPAWSPGFARPGRG RPYMASRPPGDLAEGGRAL QSLQLRLLTPTFEGINGLLL KQHLVQNPVRLWQLLGGTFY FNTSRLKQKNKEKDKSKGKA PEEDEEERRRRERDDQMYRE RLRTLLVIAVVMSSLNALST SGGSSISWPDFVHEMLAKGEV QRVQVVPESDVVEVYLHPGA VVFGRRPRLALMYRMQVANID KFEEKLRAAEDELNIEAKD
Specificity	Recombinant fusion protein containing a sequence corresponding to amino acids 1-250 of human SPG7 (NP_003110.1).

ADDITIONAL INFORMATION

Note STRICTLY FOR FURTHER SCIENTIFIC RESEARCH USE ONLY (RUO). MUST NOT TO BE USED IN DIAGNOSTIC OR THERAPEUTIC APPLICATIONS.



Immunofluorescence analysis of HepG2 cells using SPG7 rabbit polyclonal antibody (STJ112287) at dilution of 1:50 (40x lens). Secondary antibody: Cy3 Goat Anti-rabbit IgG (H+L) at 1:500 dilution. Blue: DAPI for nuclear staining.

Immunofluorescence analysis of PC-12 cells using SPG7 rabbit polyclonal antibody (STJ112287) at dilution of 1:50 (40x lens). Secondary antibody: Cy3 Goat Anti-rabbit IgG (H+L) at 1:500 dilution. Blue: DAPI for nuclear staining.