

Anti-GOLGA4 antibody (1-150) (STJ112254)

GENERAL INFORMATION

Product Type	Primary antibodies
Applications	WB/IHC-P/IF/ICC/ELISA
Host / Source	Rabbit
Reactivity	Human/Mouse/Rat

PRODUCT PROPERTIES

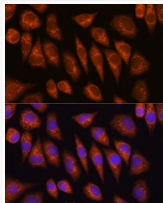
Clonality	Polyclonal
Concentration	Lot specific
Conjugation	Unconjugated
Purification	Affinity purification
Dilution Range	WB:1:1000-1:2000 IHC-P:1:50-1:200 IF/CC:1:50-1:200 ELISA:Recommended starting concentration is 1 µg/mL. Please optimize the concentration based on your specific assay requirements.
Formulation	PBS with 0.09% Sodium Azide, 50% Glycerol, pH7.3.
Isotype	IgG
Molecular Weight	Protein Mw: 261kDa Observed Mw: 280kDa
Storage Instruction	Store at -20°C for up to 1 year from the date of receipt, and avoid repeat freeze-thaw cycles.

TARGET INFORMATION

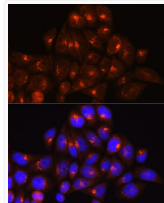
Gene ID	2803
Gene Symbol	GOLGA4
UniProt ID	GOGA4_HUMAN
Immunogen Region	1-150
Immunogen Sequence	MFKKLKQKISEEQQLQQAL APAQASSNSSTPTRMRSRTS SFTEQLDEGTPNRESGDTQS FAQKQLQLRVPSVESLFRSPI KESLFRSSSKESLVRTSSRE SLNRLDLDSSSTASFDPSPDM DSEAE DLVGNSSSLNKEQLI QRLRRMERSL
Specificity	Recombinant fusion protein containing a sequence corresponding to amino acids 1-150 of human GOLGA4 (NP_002069.2).

ADDITIONAL INFORMATION

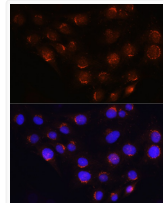
Note **STRICTLY FOR FURTHER SCIENTIFIC RESEARCH USE ONLY (RUO). MUST NOT TO BE USED IN DIAGNOSTIC OR THERAPEUTIC APPLICATIONS.**



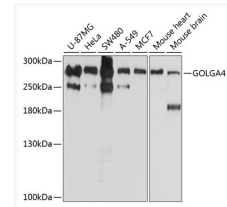
Immunofluorescence analysis of L929 cells using GOLGA4 Rabbit polyclonal antibody (STJ112254) at dilution of 1:100 (40x lens). Blue: DAPI for nuclear staining.



Immunofluorescence analysis of HeLa cells using GOLGA4 Rabbit polyclonal antibody (STJ112254) at dilution of 1:100 (40x lens). Blue: DAPI for nuclear staining.



Immunofluorescence analysis of C6 cells using GOLGA4 Rabbit polyclonal antibody (STJ112254) at dilution of 1:100 (40x lens). Blue: DAPI for nuclear staining.



Western blot analysis of extracts of various cell lines, using GOLGA4 antibody (STJ112254) at 1:1000 dilution. Secondary antibody: HRP Goat Anti-Rabbit IgG (H+L) (STJ000856) at 1:10000 dilution. Lysates/proteins: 25 µg per lane. Blocking buffer: 3% nonfat dry milk in TBST. Detection: ECL Basic Kit. Exposure time: 5s.