

Anti-CACNA1E antibody (2014-2313) (STJ112241)

GENERAL INFORMATION

Product Type	Primary antibodies
Applications	WB/ELISA
Host / Source	Rabbit
Reactivity	Human/Mouse/Rat

PRODUCT PROPERTIES

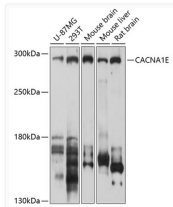
Clonality	Polyclonal
Concentration	Lot specific
Conjugation	Unconjugated
Purification	Affinity purification
Dilution Range	WB:1:500-1:2000 ELISA:Recommended starting concentration is 1 µg/mL. Please optimize the concentration based on your specific assay requirements.
Formulation	PBS with 0.02% Sodium Azide, 50% Glycerol, pH 7.3.
Isotype	IgG
Molecular Weight	Protein Mw: 262kDa Observed Mw: 290kDa
Storage Instruction	Store at -20°C for up to 1 year from the date of receipt, and avoid repeat freeze-thaw cycles.

TARGET INFORMATION

Gene ID	777
Gene Symbol	CACNA1E
UniProt ID	CAC1E_HUMAN
Immunogen Region	2014-2313
Immunogen Sequence	PSSMRRSFSTIRDKRSNSSW LEEFSMERSSENTYKSRRRS YHSSLRLSAHRLNSDSGHKS DTHRSGGREGRGRSKERKHL SPDVSRCSNSEERGTDWES PERRQSRSPSEGRSQTPNRQ GTGSLSESSIPVSDTSTPR RSRRLPPVPPKPRLLSYS SLIRHAGSISPPADGSEEGS PLTSQALESNNACLTESSNS PHPQQSQHASPQRYISEPYL ALHEDSHASDCGEEETLTF
Specificity	Recombinant fusion protein containing a sequence corresponding to amino acids 2014-2313 of human CACNA1E (NP_001192222.1).

ADDITIONAL INFORMATION

Note **STRICTLY FOR FURTHER SCIENTIFIC RESEARCH USE ONLY (RUO). MUST NOT TO BE USED IN DIAGNOSTIC OR THERAPEUTIC APPLICATIONS.**



Western blot analysis of extracts of various cell lines, using CACNA1E antibody (STJ112241) at 1:1000 dilution. Secondary antibody: HRP Goat Anti-Rabbit IgG (H+L) (STJS000856) at 1:10000 dilution. Lysates/proteins: 25 µg per lane. Blocking buffer: 3% nonfat dry milk in TBST. Detection: ECL Basic Kit. Exposure time: 30s.