

Anti-ARMS2 antibody (1-107) (STJ112200)

GENERAL INFORMATION

Product Type	Primary antibodies
Applications	WB/ELISA
Host / Source	Rabbit
Reactivity	Mouse

PRODUCT PROPERTIES

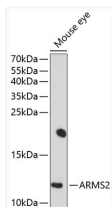
Clonality	Polyclonal
Concentration	Lot specific
Conjugation	Unconjugated
Purification	Affinity purification
Dilution Range	WB:1:200-1:1000 ELISA:Recommended starting concentration is 1 Mu g/mL. Please optimize the concentration based on your specific assay requirements.
Formulation	PBS with 0.02% Sodium Azide, 50% Glycerol, pH 7.3.
Isotype	IgG
Molecular Weight	Protein Mw: 11kDa Observed Mw: 11kDa
Storage Instruction	Store at -20°C for up to 1 year from the date of receipt, and avoid repeat freeze-thaw cycles.

TARGET INFORMATION

Gene ID	387715
Gene Symbol	ARMS2
UniProt ID	ARMS2_HUMAN
Immunogen Region	1-107
Immunogen Sequence	MLRLYPGPMVTEAEGKGGPE MASLSSSVVVPVSFISTLRRES VLDPGVGGEGASDKQRSKLS LSHSMIPAAKIHTELCLPAF FSPAGTQRRFQQPQHHLTLS IIHTAAR
Specificity	Recombinant fusion protein containing a sequence corresponding to amino acids 1-107 of human ARMS2 (NP_001093137.1).

ADDITIONAL INFORMATION

Note STRICTLY FOR FURTHER SCIENTIFIC RESEARCH USE ONLY (RUO). MUST NOT TO BE USED IN DIAGNOSTIC OR THERAPEUTIC APPLICATIONS.



Western blot analysis of extracts of mouse eye, using ARMS2 antibody (STJ112200) at 1:1000 dilution. Secondary antibody: HRP Goat Anti-Rabbit IgG (H+L) (STJS000856) at 1:10000 dilution. Lysates/proteins: 25 Mu g per lane. Blocking buffer: 3% nonfat dry milk in TBST. Detection: ECL Basic Kit. Exposure time: 90s.