

Anti-PADI1 antibody (1-662) (STJ112184)

GENERAL INFORMATION

Product Type	Primary antibodies
Applications	WB/ELISA
Host / Source	Rabbit
Reactivity	Mouse/Rat

PRODUCT PROPERTIES

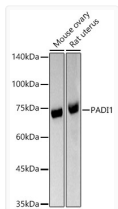
Clonality	Polyclonal
Concentration	Lot specific
Conjugation	Unconjugated
Purification	Affinity purification
Dilution Range	WB:1:500-1:1000 ELISA:Recommended starting concentration is 1 Mu g/mL. Please optimize the concentration based on your specific assay requirements.
Formulation	PBS with 0.05% Proclin300, 50% Glycerol, pH 7.3.
Isotype	IgG
Molecular Weight	Protein Mw: 75kDa Observed Mw: 75kDa
Storage Instruction	Store at -20°C for up to 1 year from the date of receipt, and avoid repeat freeze-thaw cycles.

TARGET INFORMATION

Gene ID	29943
Gene Symbol	PADI1
UniProt ID	PADI1_HUMAN
Immunogen Region	1-662
Immunogen Sequence	MAPKRVVQLSLKMPHVAVCV VGVEAHVDIHSVDPKGANSF RVSGSSGVEVFMVYNRTRVK EPIGKARWPLDADMMVSV GTASKELKDFKVRVSYFGEQ EDQALGRSVLYLTGVDISLE VDTGRTGKVKRSQGDKKTWR WGPEGYGAILLVNCDRDNHR SAEPDLTHSWLMSLADLQDM SPMLLSCNGPDKLFDShKLV LNVFSDSKRVRVFCARGGN SLSDYKQVLGPQCLSVEVE
Specificity	Recombinant fusion protein containing a sequence corresponding to amino acids 1-277 of human PADI1 (NP_037490.2).

ADDITIONAL INFORMATION

Note **STRICTLY FOR FURTHER SCIENTIFIC RESEARCH USE ONLY (RUO). MUST NOT TO BE USED IN DIAGNOSTIC OR THERAPEUTIC APPLICATIONS.**



Western blot analysis of various lysates, using PADI1 antibody (STJ112184) at 1:600 dilution. Secondary antibody: HRP Goat Anti-Rabbit IgG (H+L) (STJS000856) at 1:10000 dilution. Lysates/proteins: 25 Mu g per lane. Blocking buffer: 3% nonfat dry milk in TBST. Detection: ECL Basic Kit. Exposure time: 60s.