

Anti-CLUH antibody (1120-1309) (STJ112179)

GENERAL INFORMATION

Product Type	Primary antibodies
Applications	WB/IHC-P/IF/ICC/ELISA
Host / Source	Rabbit
Reactivity	Human/Mouse

PRODUCT PROPERTIES

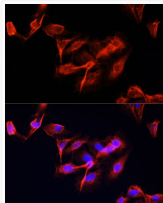
Clonality	Polyclonal
Concentration	Lot specific
Conjugation	Unconjugated
Purification	Affinity purification
Dilution Range	WB:1:1000-1:4000 IHC-P:1:50-1:200 IF/CC:1:50-1:200 ELISA:Recommended starting concentration is 1 µg/mL. Please optimize the concentration based on your specific assay requirements.
Formulation	PBS with 0.02% Sodium Azide, 50% Glycerol, pH 7.3.
Isotype	IgG
Molecular Weight	Protein Mw: 147kDa Observed Mw: 180kDa
Storage Instruction	Store at -20°C for up to 1 year from the date of receipt, and avoid repeat freeze-thaw cycles.

TARGET INFORMATION

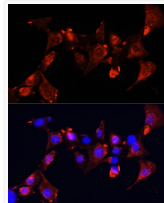
Gene ID	23277
Gene Symbol	CLUH
UniProt ID	CLU_HUMAN
Immunogen Region	1120-1309
Immunogen Sequence	YDLSLRFLLENALAVSTKYHG PKALKVALSHHLVARVYESK AEFRSALQHEKEGYTIYKTQ LGEDHEKTKESSEYLKCLTQ QAVLQRTMNEIYRNGSSAN IPPLKFTAPSMASVLEQLNV INGILFIPLSQKDLENLKA E VARRHQLQEASRNRDRAEEP MATEPAPAGAPGDLGSQPPA AKDPSPSVQG
Specificity	Recombinant fusion protein containing a sequence corresponding to amino acids 1120-1309 of human CLUH (NP_056044.3).

ADDITIONAL INFORMATION

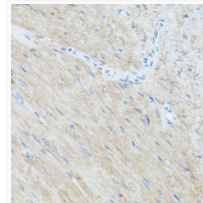
Note **STRICTLY FOR FURTHER SCIENTIFIC RESEARCH USE ONLY (RUO). MUST NOT TO BE USED IN DIAGNOSTIC OR THERAPEUTIC APPLICATIONS.**



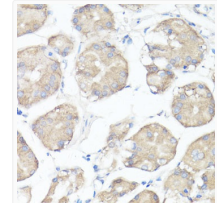
Immunofluorescence analysis of U-2 OS cells using CLUH Polyclonal Antibody (STJ112179) at dilution of 1:100 (40x lens). Blue: DAPI for nuclear staining.



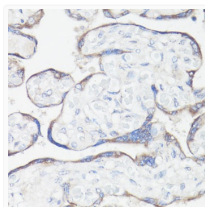
Immunofluorescence analysis of NIH-3T3 cells using CLUH Polyclonal Antibody (STJ112179) at dilution of 1:100 (40x lens). Blue: DAPI for nuclear staining.



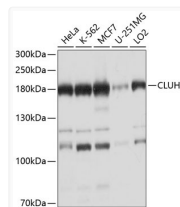
Immunohistochemistry analysis of paraffin-embedded mouse heart using CLUH antibody (STJ112179) at dilution of 1:100 (40x lens). Perform microwave antigen retrieval with 10 mM PBS buffer pH 7.2 before commencing with immunohistochemistry staining protocol.



Immunohistochemistry analysis of paraffin-embedded human stomach using CLUH antibody (STJ112179) at dilution of 1:100 (40x lens). Perform microwave antigen retrieval with 10 mM PBS buffer pH 7.2 before commencing with immunohistochemistry staining protocol.



Immunohistochemistry analysis of paraffin-embedded human placenta using CLUH antibody (STJ112179) at dilution of 1:100 (40x lens). Perform microwave antigen retrieval with 10 mM PBS buffer pH 7.2 before commencing with immunohistochemistry staining protocol.



Western blot analysis of extracts of various cell lines, using CLUH antibody (STJ112179) at 1:1000 dilution. Secondary antibody: HRP Goat Anti-Rabbit IgG (H+L) (STJS000856) at 1:10000 dilution. Lysates/proteins: 25 µg per lane. Blocking buffer: 3% nonfat dry milk in TBST. Detection: ECL Basic Kit. Exposure time: 15s.