

Anti-DFFB antibody (109-338) (STJ112149)

GENERAL INFORMATION

Product Type	Primary antibodies
Applications	WB/IHC-P/ELISA
Host / Source	Rabbit
Reactivity	Human/Mouse

PRODUCT PROPERTIES

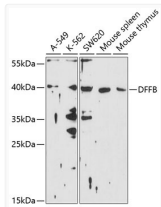
Clonality	Polyclonal
Concentration	Lot specific
Conjugation	Unconjugated
Purification	Affinity purification
Dilution Range	WB:1:200-1:1000 IHC-P:1:50-1:200 ELISA:Recommended starting concentration is 1 Mu g/mL. Please optimize the concentration based on your specific assay requirements.
Formulation	PBS with 0.02% Sodium Azide, 50% Glycerol, pH 7.3.
Isotype	IgG
Molecular Weight	Protein Mw: 39kDa Observed Mw: 39kDa
Storage Instruction	Store at -20°C for up to 1 year from the date of receipt, and avoid repeat freeze-thaw cycles.

TARGET INFORMATION

Gene ID	1677
Gene Symbol	DFFB
UniProt ID	DFFB_HUMAN
Immunogen Region	109-338
Immunogen Sequence	DEQAPQRQRLLADLLHNVSQ NIAAETRAEDPPWFEGLESR FQSKSGYLRYSCESRIRSYL REVSSYPSTVGAEAEQEEFLR VLGSMCQRLRSMQYNGSYFD RGAKGGSRLCTPEGWFSCQG PFDMDSCLSRHSINPYSNRE SRILFSTWNLDHIEKKRTI IPTLVEAIKEQDGREVDWEY FYGLLFTSENKLVHIVCHK KTTTKLNC DPSRIYKPQTRL KRKQPVRKRQ
Specificity	Recombinant fusion protein containing a sequence corresponding to amino acids 109-338 of human DFFB (NP_004393.1).

ADDITIONAL INFORMATION

Note STRICTLY FOR FURTHER SCIENTIFIC RESEARCH USE ONLY (RUO). MUST NOT TO BE USED IN DIAGNOSTIC OR THERAPEUTIC APPLICATIONS.



Western blot analysis of extracts of various cell lines, using DFFB antibody (STJ112149) at 1:1000 dilution. Secondary antibody: HRP Goat Anti-Rabbit IgG (H+L) (STJS000856) at 1:10000 dilution. Lysates/proteins: 25 Mu g per lane. Blocking buffer: 3% nonfat dry milk in TBST. Detection: ECL Basic Kit. Exposure time: 90s.