

Anti-STAB2 antibody (1550-1850) (STJ112114)

GENERAL INFORMATION

Product Type	Primary antibodies
Applications	WB/ELISA
Host / Source	Rabbit
Reactivity	Human/Mouse/Rat

PRODUCT PROPERTIES

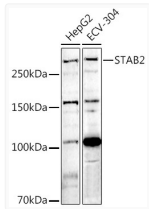
Clonality	Polyclonal
Concentration	Lot specific
Conjugation	Unconjugated
Purification	Affinity purification
Dilution Range	WB:1:500-1:1000 ELISA:Recommended starting concentration is 1 μ g/mL. Please optimize the concentration based on your specific assay requirements.
Formulation	PBS with 0.02% Sodium Azide, 50% Glycerol, pH 7.3.
Isotype	IgG
Molecular Weight	Protein Mw: 277kDa Observed Mw: 277kDa
Storage Instruction	Store at -20°C for up to 1 year from the date of receipt, and avoid repeat freeze-thaw cycles.

TARGET INFORMATION

Gene ID	55576
Gene Symbol	STAB2
UniProt ID	STAB2_HUMAN
Immunogen Region	1550-1850
Immunogen Sequence	GKVCTLINVCLTKNGGCSEF AICNHTGQVERTCTCKPNIY GDGFTCRGSIYQELPKNPKT SQYFFQLQEHFVKDLVGP GP FTVFAPLSAAFDEEARVKDW DKYGLMPQVLRVYHVVACHQL LLENLKLISNATSLQGEPIV ISVSGSTVYINNKAIISSD IISTNGIVHIIDKLLSPKNL LITPKDNSGRILQNLTLAT NNGYIKFSNLIQDSGLLSVI TDPIHTPVTLFWPTDQALH
Specificity	Recombinant fusion protein containing a sequence corresponding to amino acids 1550-1850 of human STAB2 (NP_060034.9).

ADDITIONAL INFORMATION

Note **STRICTLY FOR FURTHER SCIENTIFIC RESEARCH USE ONLY (RUO). MUST NOT TO BE USED IN DIAGNOSTIC OR THERAPEUTIC APPLICATIONS.**



Western blot analysis of various lysates using STAB2 Rabbit polyclonal antibody (STJ112114) at 1:1000 dilution. Secondary antibody: HRP Goat Anti-Rabbit IgG (H+L) (STJS000856) at 1:10000 dilution. Lysates/proteins: 25 μ g per lane. Blocking buffer: 3% nonfat dry milk in TBST. Detection: ECL Enhanced Kit. Exposure time: 180s.