

Anti-NRXN1 antibody (31-310) (STJ112106)

GENERAL INFORMATION

Product Type	Primary antibodies
Applications	WB/ELISA
Host / Source	Rabbit
Reactivity	Human/Mouse

PRODUCT PROPERTIES

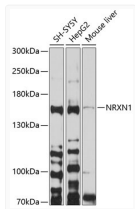
Clonality	Polyclonal
Concentration	Lot specific
Conjugation	Unconjugated
Purification	Affinity purification
Dilution Range	WB:1:500-1:2000 ELISA:Recommended starting concentration is 1 µg/mL. Please optimize the concentration based on your specific assay requirements.
Formulation	PBS with 0.02% Sodium Azide, 50% Glycerol, pH 7.3.
Isotype	IgG
Molecular Weight	Protein Mw: 15kDa/46kDa/161kDa/164kDa/169kDa Observed Mw: 162kDa
Storage Instruction	Store at -20°C for up to 1 year from the date of receipt, and avoid repeat freeze-thaw cycles.

TARGET INFORMATION

Gene ID	9378 9378
Gene Symbol	NRXN1 NRXN1
UniProt ID	NRX1B_HUMAN NRX1A_HUMAN
Immunogen Region	31-310
Immunogen Sequence	LEFPGAEGQWTRFPKWVACC EEMSFQLKTRRSARGLVLYF DDEGFCDFLELILTRGGRLQ LSFSIFCAEPATLLADTPVN DGAWHSVRIRRRQFRNTTLFI DQVEAKWVEVKSRRRDMTVF SGLFVGGGLPPELRAAALKLT LASVREREPFKGWIRDVVRVN SSQVLPVDSGKLVLDDEPPN SGGGSPCEAGEEGEGGVCLN GGVCVVDQAVDCSRTGF RGKDCSQEIKFGLQCQLPV
Specificity	Recombinant fusion protein containing a sequence corresponding to amino acids 31-310 of human NRXN1 (NP_001129131.1).

ADDITIONAL INFORMATION

Note STRICTLY FOR FURTHER SCIENTIFIC RESEARCH USE ONLY (RUO). MUST NOT TO BE USED IN DIAGNOSTIC OR THERAPEUTIC APPLICATIONS.



Western blot analysis of extracts of various cell lines, using NRXN1 antibody (STJ112106) at 1:1000 dilution. Secondary antibody: HRP Goat Anti-Rabbit IgG (H+L) (STJS000856) at 1:10000 dilution. Lysates/proteins: 25 µg per lane. Blocking buffer: 3% nonfat dry milk in TBST. Detection: ECL Basic Kit. Exposure time: 90s.