

Anti-CHRNA2 antibody (27-264) (STJ112096)

GENERAL INFORMATION

Product Type	Primary antibodies
Applications	WB/ELISA
Host / Source	Rabbit
Reactivity	Rat

PRODUCT PROPERTIES

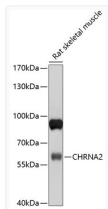
Clonality	Polyclonal
Concentration	Lot specific
Conjugation	Unconjugated
Purification	Affinity purification
Dilution Range	WB:1:500-1:2000 ELISA:Recommended starting concentration is 1 µg/mL. Please optimize the concentration based on your specific assay requirements.
Formulation	PBS with 0.02% Sodium Azide, 50% Glycerol, pH 7.3.
Isotype	IgG
Molecular Weight	Protein Mw: 60kDa Observed Mw: 60kDa
Storage Instruction	Store at -20°C for up to 1 year from the date of receipt, and avoid repeat freeze-thaw cycles.

TARGET INFORMATION

Gene ID	1135
Gene Symbol	CHRNA2
UniProt ID	ACHA2_HUMAN
Immunogen Region	27-264
Immunogen Sequence	EEAKRPPPPRAGDPLSSPSP TALPQGGSHSTETEDRLFKHL FRGYNRWARVPNTSDVVIV RFGLSIAQLIDVDEKNQMMT TNVWLKQEWSDYKLRWNPTD FGNITSLRVPSEMIWIPDIV LYNNADGEFVTHMTKAHLF STGTVHWVPPAIYKSSCSID VTFPPFDQQNCKMKFGSWTY DKAKIDLEQMEQTVDLKDYW ESGEVAIVNATGTYNSSKKYD CCAEIYPDVTYAFVIRRL
Specificity	Recombinant fusion protein containing a sequence corresponding to amino acids 27-264 of human CHRNA2 (NP_000733.2).

ADDITIONAL INFORMATION

Note **STRICTLY FOR FURTHER SCIENTIFIC RESEARCH USE ONLY (RUO). MUST NOT TO BE USED IN DIAGNOSTIC OR THERAPEUTIC APPLICATIONS.**



Western blot analysis of lysates from rat skeletal muscle, using CHRNA2 Rabbit pAb (STJ112096) at 1:1000 dilution.
 Secondary antibody: HRP-conjugated Goat anti-Rabbit IgG (H+L) (STJS000856) at 1:10000 dilution.
 Lysates/proteins: 25 µg per lane.
 Blocking buffer: 3% nonfat dry milk in TBST.
 Detection: ECL Basic Kit
 Exposure time: 10s.