

## Anti-COPE antibody (1-308) (STJ112087)

### GENERAL INFORMATION

Product Type	Primary antibodies
Applications	WB/ELISA
Host / Source	Rabbit
Reactivity	Human/Mouse/Rat

### PRODUCT PROPERTIES

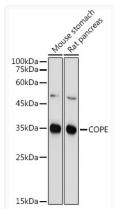
Clonality	Polyclonal
Concentration	Lot specific
Conjugation	Unconjugated
Purification	Affinity purification
Dilution Range	WB:1:500-1:1000 ELISA:Recommended starting concentration is 1 µg/mL. Please optimize the concentration based on your specific assay requirements.
Formulation	PBS with 0.02% Sodium Azide, 50% Glycerol, pH 7.3.
Isotype	IgG
Molecular Weight	Protein Mw: 34kDa Observed Mw: 34kDa
Storage Instruction	Store at -20°C for up to 1 year from the date of receipt, and avoid repeat freeze-thaw cycles.

### TARGET INFORMATION

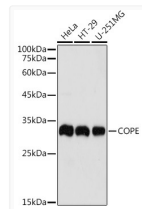
Gene ID	<a href="#">11316</a>
Gene Symbol	<a href="#">COPE</a>
UniProt ID	<a href="#">COPE_HUMAN</a>
Immunogen Region	1-308
Immunogen Sequence	MAPPAPGPASGGSGEVDLEF DVKNAFYIGSYQQCINEAQR VKLSSPERDVERDVFLYRAY LAQRKFGVVLDEIKPSSAPE LQAVRMFADYLAHESRRDSI VAELDREMSRSVDVTNTTFL LMAASIYLDHQNPDALRAL HQGDSLECTAMTVQILLKLD RLDLARKELKRMQDLDEDAT LTQLATAWVSLATGGEKLQD AYYIFQEMADKCSPTLLLLN GQAACHMAQGRWEEAEGLL
Specificity	Recombinant fusion protein containing a sequence corresponding to amino acids 1-308 of human COPE (NP_009194.2).

### ADDITIONAL INFORMATION

Note **STRICTLY FOR FURTHER SCIENTIFIC RESEARCH USE ONLY (RUO). MUST NOT TO BE USED IN DIAGNOSTIC OR THERAPEUTIC APPLICATIONS.**



Western blot analysis of extracts of various cell lines, using COPE antibody (STJ112087) at 1:1000 dilution. Secondary antibody: HRP Goat Anti-Rabbit IgG (H+L) (STJS000856) at 1:10000 dilution. Lysates/proteins: 25 µg per lane. Blocking buffer: 3% nonfat dry milk in TBST. Detection: ECL Basic Kit. Exposure time: 60s.



Western blot analysis of extracts of various cell lines, using COPE antibody (STJ112087) at 1:1000 dilution. Secondary antibody: HRP Goat Anti-Rabbit IgG (H+L) (STJS000856) at 1:10000 dilution. Lysates/proteins: 25 µg per lane. Blocking buffer: 3% nonfat dry milk in TBST. Detection: ECL Basic Kit. Exposure time: 1s.