

Anti-UGT1A6 antibody (65-270) (STJ112073)

GENERAL INFORMATION

Product Type	Primary antibodies
Applications	WB/ELISA
Host / Source	Rabbit
Reactivity	Human/Mouse

PRODUCT PROPERTIES

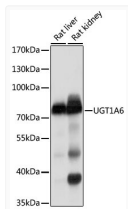
Clonality	Polyclonal
Concentration	Lot specific
Conjugation	Unconjugated
Purification	Affinity purification
Dilution Range	WB:1:500-1:1000 ELISA:Recommended starting concentration is 1 Mu g/mL. Please optimize the concentration based on your specific assay requirements.
Formulation	PBS with 0.02% Sodium Azide, 50% Glycerol, pH 7.3.
Isotype	IgG
Molecular Weight	Protein Mw: 61kDa Observed Mw: 75kDa
Storage Instruction	Store at -20°C for up to 1 year from the date of receipt, and avoid repeat freeze-thaw cycles.

TARGET INFORMATION

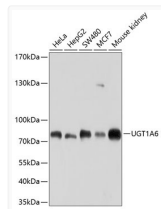
Gene ID	54578
Gene Symbol	UGT1A6
UniProt ID	UD16_HUMAN
Immunogen Region	65-270
Immunogen Sequence	LLLKESKYYTRKIYPVPYDQ EELKNRYQSFSGNNHFAERSF LTAPQTEYRNNMIVIGLYFI NCQSLQDRDTLNFFKESKF DALFTDPALPCGVILAEYLG LPSVYLFRRGFPCSLHTFSR SPDPVSYIPRCYTKFSDHMT FSQRVANFLVNLLEPYLYFC LFSKYEELASAVLKRVDVII TLYQKVSWWLLRYDFVLEYP RPVMPN
Specificity	Recombinant fusion protein containing a sequence corresponding to amino acids 65-270 of human UGT1A6 (NP_001063.2).

ADDITIONAL INFORMATION

Note **STRICTLY FOR FURTHER SCIENTIFIC RESEARCH USE ONLY (RUO). MUST NOT TO BE USED IN DIAGNOSTIC OR THERAPEUTIC APPLICATIONS.**



Western blot analysis of extracts of HepG2 cells, using UGT1A6 antibody (STJ112073) at 1:1000 dilution. Secondary antibody: HRP Goat Anti-Rabbit IgG (H+L) (STJS000856) at 1:10000 dilution. Lysates/proteins: 25 Mu g per lane. Blocking buffer: 3% nonfat dry milk in TBST. Detection: ECL Basic Kit. Exposure time: 10s.



Western blot analysis of extracts of various cell lines, using UGT1A6 antibody (STJ112073) at 1:1000 dilution. Secondary antibody: HRP Goat Anti-Rabbit IgG (H+L) (STJS000856) at 1:10000 dilution. Lysates/proteins: 25 Mu g per lane. Blocking buffer: 3% nonfat dry milk in TBST. Detection: ECL Basic Kit. Exposure time: 60s.