

Anti-PAPD7 antibody (303-542) (STJ112057)

GENERAL INFORMATION

Product Type	Primary antibodies
Applications	WB/IHC-P/ELISA
Host / Source	Rabbit
Reactivity	Human/Mouse/Rat

PRODUCT PROPERTIES

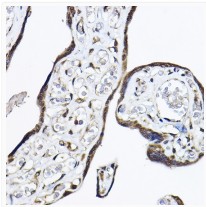
Clonality	Polyclonal
Concentration	Lot specific
Conjugation	Unconjugated
Purification	Affinity purification
Dilution Range	WB:1:500-1:1000 IHC-P:1:50-1:200 ELISA:Recommended starting concentration is 1 Mu g/mL. Please optimize the concentration based on your specific assay requirements.
Formulation	PBS with 0.02% Sodium Azide, 50% Glycerol, pH 7.3.
Isotype	IgG
Molecular Weight	Protein Mw: 85kDa Observed Mw: 82kDa
Storage Instruction	Store at -20°C for up to 1 year from the date of receipt, and avoid repeat freeze-thaw cycles.

TARGET INFORMATION

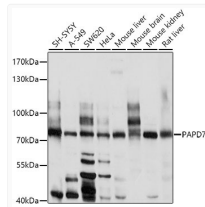
Gene ID	11044
Gene Symbol	TENT4
UniProt ID	PAPD7_HUMAN
Immunogen Region	303-542
Immunogen Sequence	GSKAHPSPGMDSRIKIKERI ATCNGEQTQNREPESFYGQR LTLSSLSPQLLSSGSSASSV SSLSGSDVDSPTPPCTTPSV YQFSLQAPAPLMAGLPTALP MPSTGKPPQTTSTRLLIMTTNN QTRFTIPPPTLGVAPVPCRQ AGVEGTASLKAVHHMSSPAI PSASPNPLSSPHLYHKQHNG MKLSMKGSHGHTQGGGYSSV GSGGVRPPVGNRHHQYNRT GWRKKHTHTRDPSLVSL
Specificity	Recombinant fusion protein containing a sequence corresponding to amino acids 303-542 of human PAPD7 (NP_008930.1).

ADDITIONAL INFORMATION

Note STRICTLY FOR FURTHER SCIENTIFIC RESEARCH USE ONLY (RUO). MUST NOT TO BE USED IN DIAGNOSTIC OR THERAPEUTIC APPLICATIONS.



Immunohistochemistry analysis of paraffin-embedded human placenta using PAPD7 Rabbit polyclonal antibody (STJ112057) at dilution of 1:50 (40x lens). Perform high pressure antigen retrieval with 10 mM citrate buffer pH 6.0 before commencing with immunohistochemistry staining protocol.



Western blot analysis of extracts of various cell lines, using PAPD7 antibody (STJ112057) at 1:1000 dilution. Secondary antibody: HRP Goat Anti-Rabbit IgG (H+L) (STJS000856) at 1:10000 dilution. Lysates/proteins: 25 Mu g per lane. Blocking buffer: 3% nonfat dry milk in TBST. Detection: ECL Enhanced Kit. Exposure time: 90s.