

Anti-CACNG1 antibody (30-110) (STJ112054)

GENERAL INFORMATION

Product Type	Primary antibodies
Applications	WB/IF/ICC/ELISA
Host / Source	Rabbit
Reactivity	Human/Mouse/Rat

PRODUCT PROPERTIES

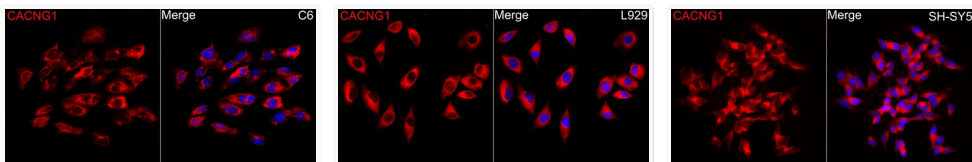
Clonality	Polyclonal
Concentration	Lot specific
Conjugation	Unconjugated
Purification	Affinity purification
Dilution Range	WB:1:1000-1:4000 IF/CC: 1:100-1:500 ELISA:Recommended starting concentration is 1 µg/mL. Please optimize the concentration based on your specific assay requirements.
Formulation	PBS with 0.02% Sodium Azide, 50% Glycerol, pH 7.3.
Isotype	IgG
Molecular Weight	Protein Mw: 25kDa Observed Mw: 23kDa
Storage Instruction	Store at -20°C for up to 1 year from the date of receipt, and avoid repeat freeze-thaw cycles.

TARGET INFORMATION

Gene ID	786
Gene Symbol	CACNG1
UniProt ID	CCG1_HUMAN
Immunogen Region	30-110
Immunogen Sequence	DHWAVLSPHMEHHNTTCEAA HFGLWRICTKRIPMDDSKTC GPITLPGKNCYSYFRHFNPG ESSEIFEFTTQKEYSISAAA I
Specificity	Recombinant fusion protein containing a sequence corresponding to amino acids 30-110 of human CACNG1 (NP_000718.1).

ADDITIONAL INFORMATION

Note STRICTLY FOR FURTHER SCIENTIFIC RESEARCH USE ONLY (RUO). MUST NOT TO BE USED IN DIAGNOSTIC OR THERAPEUTIC APPLICATIONS.



Immunofluorescence analysis of C6 cells using CACNG1 rabbit polyclonal antibody (STJ112054) at dilution of 1:300 (40x lens). Secondary antibody: Cy3 Goat Anti-rabbit IgG (H+L) at 1:500 dilution. Blue: DAPI for nuclear staining.

Immunofluorescence analysis of L929 cells using CACNG1 rabbit polyclonal antibody (STJ112054) at dilution of 1:300 (40x lens). Secondary antibody: Cy3 Goat Anti-rabbit IgG (H+L) at 1:500 dilution. Blue: DAPI for nuclear staining.

Immunofluorescence analysis of SH-SY5Y cells using CACNG1 rabbit polyclonal antibody (STJ112054) at dilution of 1:300 (40x lens). Secondary antibody: Cy3 Goat Anti-rabbit IgG (H+L) at 1:500 dilution. Blue: DAPI for nuclear staining.