

Anti-CD300A antibody (18-180) (STJ112046)

GENERAL INFORMATION

Product Type	Primary antibodies
Applications	WB/ELISA
Host / Source	Rabbit
Reactivity	Human

PRODUCT PROPERTIES

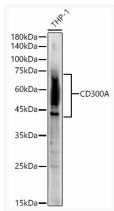
Clonality	Polyclonal
Concentration	Lot specific
Conjugation	Unconjugated
Purification	Affinity purification
Dilution Range	WB:1:1000-1:5000 ELISA:Recommended starting concentration is 1 Mu g/mL. Please optimize the concentration based on your specific assay requirements.
Formulation	PBS with 0.02% Sodium Azide, 50% Glycerol, pH 7.3.
Isotype	IgG
Molecular Weight	Protein Mw: 33kDa Observed Mw: 40-70kDa
Storage Instruction	Store at-20°C for up to 1 year from the date of receipt, and avoid repeat freeze-thaw cycles.

TARGET INFORMATION

Gene ID	11314
Gene Symbol	CD300A
UniProt ID	CLM8_HUMAN
Immunogen Region	18-180
Immunogen Sequence	LSKCRTVAGPVGGSLSVQCP YEKEHRTLNKYWCRPPQIFL CDKIVETKGSAGKRNQRVSI RDSPANLSFTVTLENLTEED AGTYWCGVDTPWLRDFHDPV VEVEVSVPASTSMTPASIT AAKTSTITTAFFPPVSSTTLF AVGATHSASIQEETEEVNS QLP
Specificity	Recombinant fusion protein containing a sequence corresponding to amino acids 18-180 of human CD300A (NP_009192.2).

ADDITIONAL INFORMATION

Note STRICTLY FOR FURTHER SCIENTIFIC RESEARCH USE ONLY (RUO). MUST NOT TO BE USED IN DIAGNOSTIC OR THERAPEUTIC APPLICATIONS.



Western blot analysis of THP-1, using CD300A antibody (STJ112046) at 1:2000 dilution. Secondary antibody: HRP Goat Anti-Rabbit IgG (H+L) (STJS000856) at 1:10000 dilution. Lysates/proteins: 25 Mu g per lane. Blocking buffer: 3% nonfat dry milk in TBST. Detection: ECL Enhanced Kit. Exposure time: 30s.