

Anti-PELI3 antibody (1-280) (STJ112039)

GENERAL INFORMATION

Product Type	Primary antibodies
Applications	WB/ELISA
Host / Source	Rabbit
Reactivity	Human

PRODUCT PROPERTIES

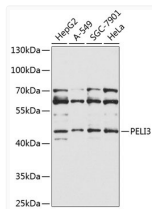
Clonality	Polyclonal
Concentration	Lot specific
Conjugation	Unconjugated
Purification	Affinity purification
Dilution Range	WB:1:500-1:2000 ELISA:Recommended starting concentration is 1 Mu g/mL. Please optimize the concentration based on your specific assay requirements.
Formulation	PBS with 0.02% Sodium Azide, 50% Glycerol, pH 7.3.
Isotype	IgG
Molecular Weight	Protein Mw: 51kDa Observed Mw: 50kDa
Storage Instruction	Store at -20°C for up to 1 year from the date of receipt, and avoid repeat freeze-thaw cycles.

TARGET INFORMATION

Gene ID	246330
Gene Symbol	PELI3
UniProt ID	PELI3_HUMAN
Immunogen Region	1-280
Immunogen Sequence	MVLEGNPEVGSPTS DLQHR G NGK G SCV L SSP G EDA Q PGEE P IKY G ELI V LGC E E E G E E T E AQR G E V T G P R A H S C Y N G C L A S G D K G R R R S R L A L S R R S H A N G V K P D V M H H I S T P L V S K A L S N R G Q H S I S Y T L S R S H S V I V E Y T H D S D T D M F I G R S T E N M I D F V V T D T S P G G A A E G P S A Q S T I S R Y A C R I L C D R R P P Y T A R I Y A A G F D A S S N I F L G E R A A K W R T P D G L M D G L T T N G V L
Specificity	Recombinant fusion protein containing a sequence corresponding to amino acids 1-280 of human PELI3 (NP_659502.2).

ADDITIONAL INFORMATION

Note **STRICTLY FOR FURTHER SCIENTIFIC RESEARCH USE ONLY (RUO). MUST NOT TO BE USED IN DIAGNOSTIC OR THERAPEUTIC APPLICATIONS.**



Western blot analysis of various lysates using PELI3 Rabbit pAb (STJ112039) at 1:1000 dilution. Secondary antibody: HRP-conjugated Goat anti-Rabbit IgG (H+L) (STJS000856) at 1:10000 dilution.

Lysates/proteins: 25 Mu g per lane.
 Blocking buffer: 3% nonfat dry milk in TBST.
 Detection: ECL Basic Kit
 Exposure time: 30s.