

Anti-FRMD6 antibody (82-183) (STJ112036)

GENERAL INFORMATION

| | |
|---------------|-----------------------|
| Product Type | Primary antibodies |
| Applications | WB/IHC-P/IF/ICC/ELISA |
| Host / Source | Rabbit |
| Reactivity | Human/Mouse/Rat |

PRODUCT PROPERTIES

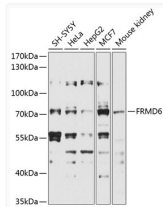
| | |
|---------------------|---|
| Clonality | Polyclonal |
| Concentration | Lot specific |
| Conjugation | Unconjugated |
| Purification | Affinity purification |
| Dilution Range | WB:1:1000-1:4000 IHC-P:1:50-1:200 IF/CC:1:50-1:200 ELISA:Recommended starting concentration is 1 Mu g/mL. Please optimize the concentration based on your specific assay requirements. |
| Formulation | PBS with 0.02% Sodium Azide, 50% Glycerol, pH7.3. |
| Isotype | IgG |
| Molecular Weight | Protein Mw: 72kDa Observed Mw: 72kDa |
| Storage Instruction | Store at -20°C for up to 1 year from the date of receipt, and avoid repeat freeze-thaw cycles. |

TARGET INFORMATION

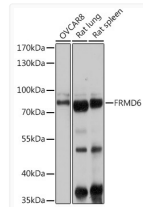
| | |
|--------------------|---|
| Gene ID | 122786 |
| Gene Symbol | FRMD6 |
| UniProt ID | FRMD6_HUMAN |
| Immunogen Region | 82-183 |
| Immunogen Sequence | KEWKKEASKVRQYEVTWGID QFGPPMIHFRVQYYVENGR LISDRAARYYYWHLRKQVL HSQCVLREEAYFLAAAFALQ ADLGNFKRNKHGKYFEPEA YF |
| Specificity | A synthetic peptide corresponding to a sequence within amino acids 82-183 of human FRMD6 (NP_001253975.1). |

ADDITIONAL INFORMATION

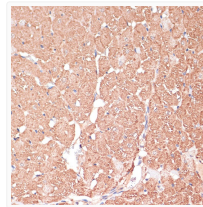
Note **STRICTLY FOR FURTHER SCIENTIFIC RESEARCH USE ONLY (RUO). MUST NOT TO BE USED IN DIAGNOSTIC OR THERAPEUTIC APPLICATIONS.**



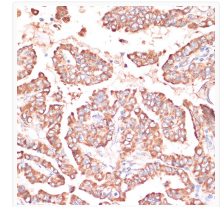
Western blot analysis of various lysates using F Secondary antibody: HRP-conjugated Goat anti-Rabbit IgG (H+L) (STJS000856) at 1:10000 dilution.
Lysates/proteins: 25 Mu g per lane.
Blocking buffer: 3% nonfat dry milk in TBST.
Detection: ECL Basic Kit
Exposure time: 5s.



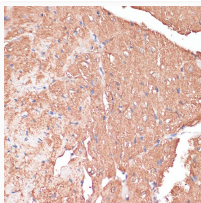
Western blot analysis of various lysates using F Secondary antibody: HRP-conjugated Goat anti-Rabbit IgG (H+L) (STJS000856) at 1:10000 dilution.
Lysates/proteins: 25 Mu g per lane.
Blocking buffer: 3% nonfat dry milk in TBST.
Detection: ECL Basic Kit
Exposure time: 1s.



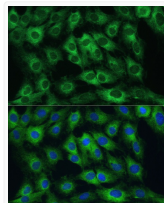
Immunohistochemistry analysis of paraffin-embedded Rat heart using F Microwave antigen retrieval performed with 0.01M PBS Buffer (pH 7.2) prior to immunohistochemistry staining.



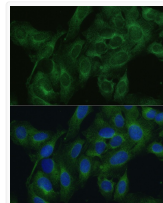
Immunohistochemistry analysis of paraffin-embedded Human thyroid cancer using F Microwave antigen retrieval performed with 0.01M PBS Buffer (pH 7.2) prior to immunohistochemistry staining.



Immunohistochemistry analysis of paraffin-embedded Mouse heart using F Microwave antigen retrieval performed with 0.01M PBS Buffer (pH 7.2) prior to immunohistochemistry staining.



Immunofluorescence analysis of C6 cells using F Blue: DAPI for nuclear staining.



Immunofluorescence analysis of U2OS cells using F Blue: DAPI for nuclear staining.