

Anti-UQCC2 antibody (14-126) (STJ112027)

GENERAL INFORMATION

Product Type	Primary antibodies
Applications	WB/IHC-P/ELISA
Host / Source	Rabbit
Reactivity	Human/Mouse/Rat

PRODUCT PROPERTIES

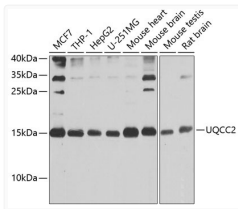
Clonality	Polyclonal
Concentration	Lot specific
Conjugation	Unconjugated
Purification	Affinity purification
Dilution Range	WB:1:500-1:2000 IHC-P:1:50-1:200 ELISA:Recommended starting concentration is 1 Mu g/mL. Please optimize the concentration based on your specific assay requirements.
Formulation	PBS with 0.02% Sodium Azide, 50% Glycerol, pH 7.3.
Isotype	IgG
Molecular Weight	Protein Mw: 15kDa Observed Mw: 15kDa
Storage Instruction	Store at -20°C for up to 1 year from the date of receipt, and avoid repeat freeze-thaw cycles.

TARGET INFORMATION

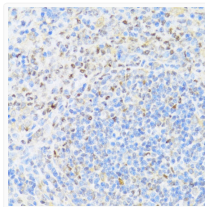
Gene ID	84300
Gene Symbol	UQCC2
UniProt ID	UQCC2_HUMAN
Immunogen Region	14-126
Immunogen Sequence	EEWVPVDETKRGRDLGAYLRQ RVAQAFREGENTQVAEPEAC DQMYESLARLHSNYYKHKYP RPRDTSFSGLSLEEYKLILS TDTLEELKEIDKGMWKKLQE KFAPKGPEEDHKA
Specificity	Recombinant fusion protein containing a sequence corresponding to amino acids 14-126 of human UQCC2 (NP_115716.1).

ADDITIONAL INFORMATION

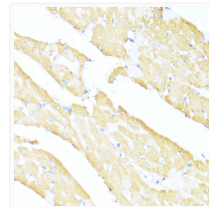
Note STRICTLY FOR FURTHER SCIENTIFIC RESEARCH USE ONLY (RUO). MUST NOT TO BE USED IN DIAGNOSTIC OR THERAPEUTIC APPLICATIONS.



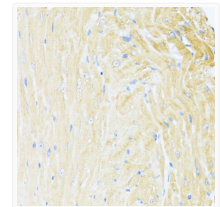
Western blot analysis of various lysates using UQCC2 Rabbit pAb (STJ112027) at 1:1000 dilution.
Secondary antibody: HRP-conjugated Goat anti-Rabbit IgG (H+L) (STJS000856) at 1:10000 dilution.
Lysates/proteins: 25 Mu g per lane.
Blocking buffer: 3% nonfat dry milk in TBST.
Detection: ECL Basic Kit
Exposure time: 5s.



Immunohistochemistry analysis of paraffin-embedded Rat spleen using UQCC2 Rabbit pAb (STJ112027) at dilution of 1:100 (40x lens).
Microwave antigen retrieval performed with 0.01M PBS Buffer (pH 7. 2) prior to immunohistochemistry staining.



Immunohistochemistry analysis of paraffin-embedded Rat heart using UQCC2 Rabbit pAb (STJ112027) at dilution of 1:100 (40x lens).
Microwave antigen retrieval performed with 0.01M PBS Buffer (pH 7. 2) prior to immunohistochemistry staining.



Immunohistochemistry analysis of paraffin-embedded Mouse heart using UQCC2 Rabbit pAb (STJ112027) at dilution of 1:100 (40x lens).
Microwave antigen retrieval performed with 0.01M PBS Buffer (pH 7. 2) prior to immunohistochemistry staining.