

Anti-SAV1 antibody (199-383) (STJ112021)

GENERAL INFORMATION

Product Type	Primary antibodies
Applications	WB/ELISA
Host / Source	Rabbit
Reactivity	Human/Mouse

PRODUCT PROPERTIES

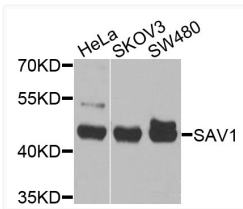
Clonality	Polyclonal
Concentration	Lot specific
Conjugation	Unconjugated
Purification	Affinity purification
Dilution Range	WB:1:1000-1:4000 ELISA:Recommended starting concentration is 1 Mu g/mL. Please optimize the concentration based on your specific assay requirements.
Formulation	PBS with 0.09% Sodium Azide, 50% Glycerol, pH 7.3.
Isotype	IgG
Molecular Weight	Protein Mw: 45kDa Observed Mw: 45kDa
Storage Instruction	Store at -20°C for up to 1 year from the date of receipt, and avoid repeat freeze-thaw cycles.

TARGET INFORMATION

Gene ID	60485
Gene Symbol	SAV1
UniProt ID	SAV1_HUMAN
Immunogen Region	199-383
Immunogen Sequence	LPLPPGWSVDWTMRGRKYYI DHNTNTTHWSHPLEREGLPP GWERVESSEFGTYVVDHTNK KAQYRHPCAPSVPRYDQPPP VTYQPQQTERNQSLVLPANP YHTAEIPDWLQVYARAPVKY DHILKWELFQLADLDTYQGM LKLLFMKELEQIVKMYEAYR QALLTELENRKQRQWYAQQ HGKNF
Specificity	Recombinant fusion protein containing a sequence corresponding to amino acids 199-383 of human SAV1 (NP_068590.1).

ADDITIONAL INFORMATION

Note STRICTLY FOR FURTHER SCIENTIFIC RESEARCH USE ONLY (RUO). MUST NOT TO BE USED IN DIAGNOSTIC OR THERAPEUTIC APPLICATIONS.



Western blot analysis of various lysates using SAV1 Rabbit pAb (STJ112021) at 1:1000 dilution. Secondary antibody: HRP-conjugated Goat anti-Rabbit IgG (H+L) (STJS000856) at 1:10000 dilution.

Lysates/proteins: 25 Mu g per lane.
 Blocking buffer: 3% nonfat dry milk in TBST.
 Detection: ECL Basic Kit
 Exposure time: 30s.