

Anti-SOCS6 antibody (1-210) (STJ111998)

GENERAL INFORMATION

Product Type	Primary antibodies
Applications	WB/IHC-P/ELISA
Host / Source	Rabbit
Reactivity	Human/Mouse

PRODUCT PROPERTIES

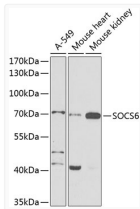
Clonality	Polyclonal
Concentration	Lot specific
Conjugation	Unconjugated
Purification	Affinity purification
Dilution Range	WB:1:500-1:2000 IHC-P:1:50-1:200 ELISA:Recommended starting concentration is 1 µg/mL. Please optimize the concentration based on your specific assay requirements.
Formulation	PBS with 0.02% Sodium Azide, 50% Glycerol, pH 7.3.
Isotype	IgG
Molecular Weight	Protein Mw: 60kDa Observed Mw: 70kDa
Storage Instruction	Store at -20°C for up to 1 year from the date of receipt, and avoid repeat freeze-thaw cycles.

TARGET INFORMATION

Gene ID	9306
Gene Symbol	SOCS6
UniProt ID	SOCS6_HUMAN
Immunogen Region	1-210
Immunogen Sequence	MKKISLKLTRKSFNLNKSKE ETDFMVVQQPSLASDFGKDD SLFGSCYGKDMASCDINGED EKGKGNRSKSESLMGLTKRR LSAKQKSKGKAGTPSGSSAD EDTFSSSSAPIVFKDVRAQR PIRSTSLRSHHYPAPWPLR PTNSEETCIKMEVRVKALVH SSSPSPALNGVRKDFHDLQS ETTCQEQAANSLKSSASHNGD LHLHLDEHVP
Specificity	Recombinant fusion protein containing a sequence corresponding to amino acids 1-210 of human SOCS6 (NP_004223.2).

ADDITIONAL INFORMATION

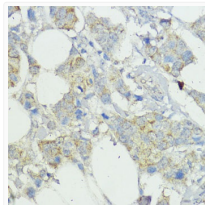
Note **STRICTLY FOR FURTHER SCIENTIFIC RESEARCH USE ONLY (RUO). MUST NOT TO BE USED IN DIAGNOSTIC OR THERAPEUTIC APPLICATIONS.**



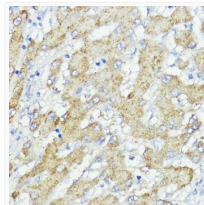
Western blot analysis of various lysates using SOCS6 Rabbit pAb (STJ111998) at 1:1000 dilution.

Secondary antibody: HRP-conjugated Goat anti-Rabbit IgG (H+L) (STJS000856) at 1:10000 dilution.

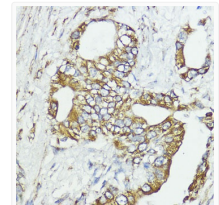
Lysates/proteins: 25 µg per lane.
Blocking buffer: 3% nonfat dry milk in TBST.
Detection: ECL Basic Kit
Exposure time: 30s.



Immunohistochemistry analysis of paraffin-embedded Human mammary cancer using SOCS6 Rabbit pAb (STJ111998) at dilution of 1:100 (40x lens). Microwave antigen retrieval performed with 0.01M PBS Buffer (pH 7.2) prior to immunohistochemistry staining.



Immunohistochemistry analysis of paraffin-embedded Human liver cancer using SOCS6 Rabbit pAb (STJ111998) at dilution of 1:100 (40x lens). Microwave antigen retrieval performed with 0.01M PBS Buffer (pH 7.2) prior to immunohistochemistry staining.



Immunohistochemistry analysis of paraffin-embedded Human lung cancer using SOCS6 Rabbit pAb (STJ111998) at dilution of 1:100 (40x lens). Microwave antigen retrieval performed with 0.01M PBS Buffer (pH 7.2) prior to immunohistochemistry staining.