

Anti-SUPV3L1 antibody (577-786) (STJ111992)

GENERAL INFORMATION

Product Type	Primary antibodies
Applications	WB/IF/ICC/ELISA
Host / Source	Rabbit
Reactivity	Human/Mouse/Rat

PRODUCT PROPERTIES

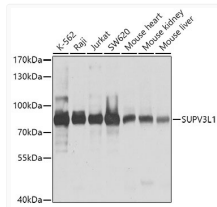
Clonality	Polyclonal
Concentration	Lot specific
Conjugation	Unconjugated
Purification	Affinity purification
Dilution Range	WB:1:1000-1:4000 IF/CC:1:50-1:200 ELISA:Recommended starting concentration is 1 µg/mL. Please optimize the concentration based on your specific assay requirements.
Formulation	PBS with 0.02% Sodium Azide, 50% Glycerol, pH 7.3.
Isotype	IgG
Molecular Weight	Protein Mw: 88kDa Observed Mw: 88kDa
Storage Instruction	Store at -20°C for up to 1 year from the date of receipt, and avoid repeat freeze-thaw cycles.

TARGET INFORMATION

Gene ID	6832
Gene Symbol	SUPV3L1
UniProt ID	SUV3_HUMAN
Immunogen Region	577-786
Immunogen Sequence	APINKKQPFVCSLLQFARQ YSRNEPLTFAWLRRYIKWPL LPPKNIKDLMDLEAVHDVLD LYLWLSYRFMDMFPDASLIR DLQKELDGIQDGVHNITKL IKMSETHKLLNLEGFSPSGSQ SRLSGTLKSQARRTRGKAL GSKATEPPSPDAGELSLASR LVQQGLLTPDMLKQLEKEWM TQQTEHNKEKTESGTHPKGT RRKKKEPDS
Specificity	Recombinant fusion protein containing a sequence corresponding to amino acids 577-786 of human SUPV3L1 (NP_003162.2).

ADDITIONAL INFORMATION

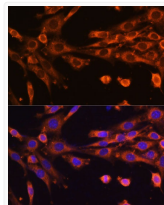
Note STRICTLY FOR FURTHER SCIENTIFIC RESEARCH USE ONLY (RUO). MUST NOT TO BE USED IN DIAGNOSTIC OR THERAPEUTIC APPLICATIONS.



Western blot analysis of various lysates using SUPV3L1 Rabbit pAb (STJ111992) at 1:1000 dilution.

Secondary antibody: HRP-conjugated Goat anti-Rabbit IgG (H+L) (STJS000856) at 1:10000 dilution.

Lysates/proteins: 25 µg per lane.
Blocking buffer: 3% nonfat dry milk in TBST.
Detection: ECL Basic Kit
Exposure time: 1s.



Immunofluorescence analysis of NIH-3T3 cells using SUPV3L1 Rabbit pAb (STJ111992) at dilution of 1:100 (40x lens). Secondary antibody: Cy3-conjugated Goat anti-Rabbit IgG (H+L) (STJS001166) at 1:500 dilution. Blue: DAPI for nuclear staining.