

Anti-PSMB3 antibody (1-205) (STJ111988)

GENERAL INFORMATION

| | |
|---------------|--------------------|
| Product Type | Primary antibodies |
| Applications | WB/IHC-P/ELISA |
| Host / Source | Rabbit |
| Reactivity | Human/Mouse/Rat |

PRODUCT PROPERTIES

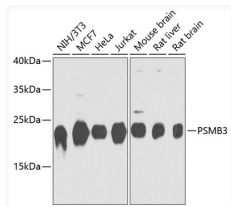
| | |
|---------------------|--|
| Clonality | Polyclonal |
| Concentration | Lot specific |
| Conjugation | Unconjugated |
| Purification | Affinity purification |
| Dilution Range | WB:1:500-1:2000 IHC-P:1:50-1:200 ELISA:Recommended starting concentration is 1 µg/mL. Please optimize the concentration based on your specific assay requirements. |
| Formulation | PBS with 0.02% Sodium Azide, 50% Glycerol, pH 7.3. |
| Isotype | IgG |
| Molecular Weight | Protein Mw: 23kDa Observed Mw: 23kDa |
| Storage Instruction | Store at -20°C for up to 1 year from the date of receipt, and avoid repeat freeze-thaw cycles. |

TARGET INFORMATION

| | |
|--------------------|--|
| Gene ID | 5691 |
| Gene Symbol | PSMB3 |
| UniProt ID | PSB3_HUMAN |
| Immunogen Region | 1-205 |
| Immunogen Sequence | MSIMSYNGGAVMAMKGKNCV AIAADRRFGIQAQMVTTDFQ KIFPMGDRLYIGLAGLATDV QTVAQRLKFRLLNLYELKEGR QIKPYTLMSMVANLLYEKRF GPYYTEPVIAGLDPKTFKPF ICSLDLIGCPMVTDDFVVSQ TCAEQMYGMCESLWEPNMDP DHLFETISQAMLNAVDRDAV SGMGVIVHIIKDKITRRTL KARMD |
| Specificity | Recombinant fusion protein containing a sequence corresponding to amino acids 1-205 of human PSMB3 (NP_002786.2). |

ADDITIONAL INFORMATION

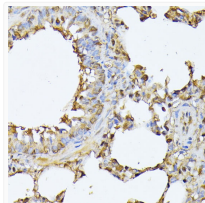
Note STRICTLY FOR FURTHER SCIENTIFIC RESEARCH USE ONLY (RUO). MUST NOT TO BE USED IN DIAGNOSTIC OR THERAPEUTIC APPLICATIONS.



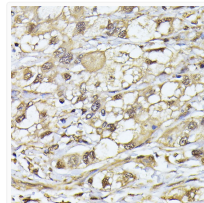
Western blot analysis of various lysates using PSMB3 Rabbit pAb (STJ111988) at 1:1000 dilution.

Secondary antibody: HRP-conjugated Goat anti-Rabbit IgG (H+L) (STJS000856) at 1:10000 dilution.

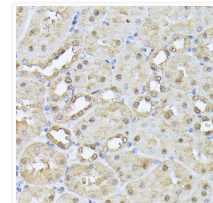
Lysates/proteins: 25 µg per lane.
Blocking buffer: 3% nonfat dry milk in TBST.
Detection: ECL Basic Kit
Exposure time: 90s.



Immunohistochemistry analysis of paraffin-embedded Rat lung using PSMB3 Rabbit pAb (STJ111988) at dilution of 1:100 (40x lens).
Microwave antigen retrieval performed with 0.01M PBS Buffer (pH 7.2) prior to immunohistochemistry staining.



Immunohistochemistry analysis of paraffin-embedded Human liver cancer using PSMB3 Rabbit pAb (STJ111988) at dilution of 1:100 (40x lens).
Microwave antigen retrieval performed with 0.01M PBS Buffer (pH 7.2) prior to immunohistochemistry staining.



Immunohistochemistry analysis of paraffin-embedded Mouse kidney using PSMB3 Rabbit pAb (STJ111988) at dilution of 1:100 (40x lens).
Microwave antigen retrieval performed with 0.01M PBS Buffer (pH 7.2) prior to immunohistochemistry staining.