

Anti-MARS antibody (1-270) (STJ111979)

GENERAL INFORMATION

Product Type	Primary antibodies
Applications	WB/IHC-P/ELISA
Host / Source	Rabbit
Reactivity	Human/Rat

PRODUCT PROPERTIES

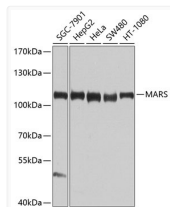
Clonality	Polyclonal
Concentration	Lot specific
Conjugation	Unconjugated
Purification	Affinity purification
Dilution Range	WB:1:500-1:2000 IHC-P:1:50-1:200 ELISA:Recommended starting concentration is 1 μ g/mL. Please optimize the concentration based on your specific assay requirements.
Formulation	PBS with 0.02% Sodium Azide, 50% Glycerol, pH 7.3.
Isotype	IgG
Molecular Weight	Protein Mw: 101kDa Observed Mw: 110kDa
Storage Instruction	Store at -20°C for up to 1 year from the date of receipt, and avoid repeat freeze-thaw cycles.

TARGET INFORMATION

Gene ID	4141
Gene Symbol	MARS1
UniProt ID	SYMC_HUMAN
Immunogen Region	1-270
Immunogen Sequence	MRLFVSDGVPGLPVLAAAG RARGRAEVLIVGPEDCVV PFLTRPKVPVLQLDSGNYLF STSAICRYFFLLSGWEQDDL TNQWLEWEATELQPALSAAL YYLVVQGGKKGEDVLGSVRRRA LTHIDHSLSRQNCPLAGET ESLADIVLWGALYPLLQDPA YLPEELSALHSWFQTLSTQE PCQRAAETVLKQQGVLALRP YLQKQPQSPSPAEGRAVTNEP EEEELATLSEEEIAMAVTA
Specificity	Recombinant fusion protein containing a sequence corresponding to amino acids 1-270 of human MARS (NP_004981.2).

ADDITIONAL INFORMATION

Note STRICTLY FOR FURTHER SCIENTIFIC RESEARCH USE ONLY (RUO). MUST NOT TO BE USED IN DIAGNOSTIC OR THERAPEUTIC APPLICATIONS.



Western blot analysis of various lysates using MARS Rabbit pAb (STJ111979) at 1:1000 dilution.

Secondary antibody: HRP-conjugated Goat anti-Rabbit IgG (H+L) (STJS000856) at 1:10000 dilution.

Lysates/proteins: 25 μ g per lane.
 Blocking buffer: 3% nonfat dry milk in TBST.
 Detection: ECL Basic Kit
 Exposure time: 30s.