

Anti-KIR3DS1 antibody (80-340) (STJ111977)

GENERAL INFORMATION

Product Type	Primary antibodies
Applications	WB/IHC-P/ELISA
Host / Source	Rabbit
Reactivity	Human/Mouse/Rat

PRODUCT PROPERTIES

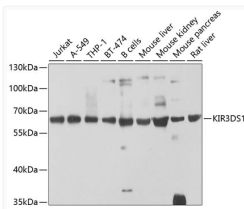
Clonality	Polyclonal
Concentration	Lot specific
Conjugation	Unconjugated
Purification	Affinity purification
Dilution Range	WB:1:500-1:2000 IHC-P:1:50-1:200 ELISA:Recommended starting concentration is 1 μ g/mL. Please optimize the concentration based on your specific assay requirements.
Formulation	PBS with 0.02% Sodium Azide, 50% Glycerol, pH 7.3.
Isotype	IgG
Molecular Weight	Protein Mw: 42kDa Observed Mw: 60kDa
Storage Instruction	Store at -20°C for up to 1 year from the date of receipt, and avoid repeat freeze-thaw cycles.

TARGET INFORMATION

Gene ID	3813
Gene Symbol	KIR3DS1
UniProt ID	K13S1_HUMAN
Immunogen Region	80-340
Immunogen Sequence	FNMSFPVTTAHAGNYTCRGSHPHSPTGWSAPSNPMVIMVTGNHRKPSLLAHGPPLVKSGER VILQCWSDIMFEHFFLHKEWISKDPSRLVGOIHGVSKANFSIGSMRDLAGTYRCYGSV THTPYQLSAPSDPLDIVVTGLYEKPSLSAQPGPKVQAGESVTLSCSSRSSYDMYHLSREG GAHERRLPAVRKVNRTFQADFPLGPATHGGTYRCFGSFRHSPYEWSDPDPLLVSVTGN
Specificity	Recombinant fusion protein containing a sequence corresponding to amino acids 80-340 of human KIR3DS1 (NP_001077008.1).

ADDITIONAL INFORMATION

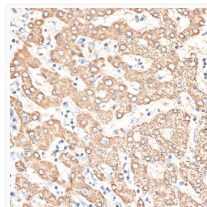
Note STRICTLY FOR FURTHER SCIENTIFIC RESEARCH USE ONLY (RUO). MUST NOT TO BE USED IN DIAGNOSTIC OR THERAPEUTIC APPLICATIONS.



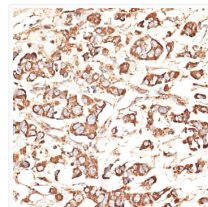
Western blot analysis of various lysates using KIR3DS1 Rabbit pAb (STJ111977) at 1:1000 dilution.

Secondary antibody: HRP-conjugated Goat anti-Rabbit IgG (H+L) (STJS000856) at 1:10000 dilution.

Lysates/proteins: 25 μ g per lane.
Blocking buffer: 3% nonfat dry milk in TBST.
Detection: ECL Basic Kit
Exposure time: 60s.



Immunohistochemistry analysis of paraffin-embedded Human liver using KIR3DS1 Rabbit pAb (STJ111977) at dilution of 1:100 (40x lens). Microwave antigen retrieval performed with 0.01M PBS Buffer (pH 7.2) prior to immunohistochemistry staining.



Immunohistochemistry analysis of paraffin-embedded Human mammary cancer using KIR3DS1 Rabbit pAb (STJ111977) at dilution of 1:100 (40x lens). Microwave antigen retrieval performed with 0.01M PBS Buffer (pH 7.2) prior to immunohistochemistry staining.