

Anti-GLDC antibody (36-290) (STJ111974)

GENERAL INFORMATION

Product Type	Primary antibodies
Applications	WB/IF/ICC/IP/ELISA
Host / Source	Rabbit
Reactivity	Human/Mouse/Rat

PRODUCT PROPERTIES

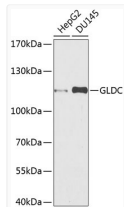
Clonality	Polyclonal
Concentration	Lot specific
Conjugation	Unconjugated
Purification	Affinity purification
Dilution Range	WB:1:500-1:2000 IF/CC:1:50-1:100 IP:0.5 Mu g-4 Mu g antibody for 200 Mu g-400 Mu g extracts of whole cells ELISA:Recommended starting concentration is 1 Mu g/mL. Please optimize the concentration based on your specific assay requirements
Formulation	PBS with 0.02% Sodium Azide, 50% Glycerol, pH 7.3.
Isotype	IgG
Molecular Weight	Protein Mw: 113kDa Observed Mw: 113kDa
Storage Instruction	Store at -20°C for up to 1 year from the date of receipt, and avoid repeat freeze-thaw cycles.

TARGET INFORMATION

Gene ID	2731
Gene Symbol	GLDC
UniProt ID	GCSP_HUMAN
Immunogen Region	36-290
Immunogen Sequence	DSSSGGGDSAAAGASRLLER LLPRHDDFARRHIGPGDKDQ REMLQTLGLASIDELIEKTV PANIRLKRPLKMEDPVCENE ILATLHAISSKNQIWRYSYIG MGYNCVSPQTILRNLENS GWITQYTPYQPEVVSQGRLES LLNYQTMVCDITGLDMANAS LLEDEGTA AAAEALQLCYRHNK RRKFLVDPRCHPQTI AVVQT RAKYTGVLTELKLPCEMDFS GKDVSGVLFQYDPTEGKVE
Specificity	Recombinant fusion protein containing a sequence corresponding to amino acids 36-290 of human GLDC (NP_000161.2).

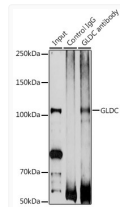
ADDITIONAL INFORMATION

Note STRICTLY FOR FURTHER SCIENTIFIC RESEARCH USE ONLY (RUO). MUST NOT TO BE USED IN DIAGNOSTIC OR THERAPEUTIC APPLICATIONS.



Western blot analysis of various lysates using GLDC Rabbit pAb (STJ111974) at 1:10000 dilution. Secondary antibody: HRP-conjugated Goat anti-Rabbit IgG (H+L) (STJS000856) at 1:10000 dilution.

Lysates/proteins: 25 Mu g per lane.
Blocking buffer: 3% nonfat dry milk in TBST.
Detection: ECL Basic Kit
Exposure time: 90s.



Immunoprecipitation analysis of 200 Mu g extracts of DU145 cells using 3 Mu g GLDC antibody (STJ111974). Western blot was performed from the immunoprecipitate using GLDC antibody (STJ111974) at a dilution of 1:1000.