

Anti-HSPB6 antibody (1-160) (STJ111929)

GENERAL INFORMATION

| | |
|---------------|--------------------|
| Product Type | Primary antibodies |
| Applications | WB/ELISA |
| Host / Source | Rabbit |
| Reactivity | Mouse |

PRODUCT PROPERTIES

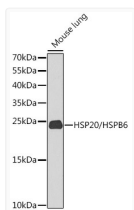
| | |
|---------------------|--|
| Clonality | Polyclonal |
| Concentration | Lot specific |
| Conjugation | Unconjugated |
| Purification | Affinity purification |
| Dilution Range | WB:1:500-1:2000 ELISA:Recommended starting concentration is 1 µg/mL. Please optimize the concentration based on your specific assay requirements. |
| Formulation | PBS with 0.02% Sodium Azide, 50% Glycerol, pH 7.3. |
| Isotype | IgG |
| Molecular Weight | Protein Mw: 17kDa Observed Mw: 17kDa |
| Storage Instruction | Store at -20°C for up to 1 year from the date of receipt, and avoid repeat freeze-thaw cycles. |

TARGET INFORMATION

| | |
|--------------------|---|
| Gene ID | 126393 |
| Gene Symbol | HSPB6 |
| UniProt ID | HSPB6_HUMAN |
| Immunogen Region | 1-160 |
| Immunogen Sequence | MEIPVPVQPSWLRRASAPLP GLSAPGRLFDQRFGEGLLEA ELAALCPTTLAPYYLRAPSV ALPVAQVPTDPGHFSVLLDV KHFSPEEIAVKVVGEGHVEVH ARHEERPDEHGFVAREFHRR YRLPPGVDPAAVTSALSPEG VLSIQAAPASQAQPPAAAK |
| Specificity | Recombinant fusion protein containing a sequence corresponding to amino acids 1-160 of human HSP20/HSP20/HSPB6 (NP_653218.1). |

ADDITIONAL INFORMATION

Note STRICTLY FOR FURTHER SCIENTIFIC RESEARCH USE ONLY (RUO). MUST NOT TO BE USED IN DIAGNOSTIC OR THERAPEUTIC APPLICATIONS.



Western blot analysis of lysates from mouse lung, using HSP20/HSPB6 Rabbit pAb (STJ111929) at 1:1000 dilution.

Secondary antibody: HRP-conjugated Goat anti-Rabbit IgG (H+L) (STJS000856) at 1:10000 dilution.

Lysates/proteins: 25 µg per lane.

Blocking buffer: 3% nonfat dry milk in TBST.

Detection: ECL Basic Kit

Exposure time: 90s.