

Anti-PAM16 antibody (21-125) (STJ111917)

GENERAL INFORMATION

Product Type	Primary antibodies
Applications	WB/ELISA
Host / Source	Rabbit
Reactivity	Human/Mouse

PRODUCT PROPERTIES

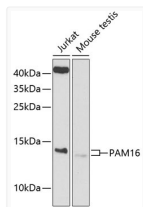
Clonality	Polyclonal
Concentration	Lot specific
Conjugation	Unconjugated
Purification	Affinity purification
Dilution Range	WB:1:500-1:2000 ELISA:Recommended starting concentration is 1 µg/mL. Please optimize the concentration based on your specific assay requirements.
Formulation	PBS with 0.02% Sodium Azide, 50% Glycerol, pH 7.3.
Isotype	IgG
Molecular Weight	Protein Mw: 14kDa Observed Mw: 14kDa
Storage Instruction	Store at -20°C for up to 1 year from the date of receipt, and avoid repeat freeze-thaw cycles.

TARGET INFORMATION

Gene ID	51025
Gene Symbol	PAM16
UniProt ID	TIM16_HUMAN
Immunogen Region	21-125
Immunogen Sequence	ARALRQEF AASRAAADARGR AGHRSAASNL SGLSLQEAQ QILNVSKLSPEEVQKNYEHL FKVNDKSVGGSFY LQSKVVR AKERLDEELKIQ AQEDREKG QMPHT
Specificity	Recombinant fusion protein containing a sequence corresponding to amino acids 21-125 of human PAM16 (NP_057153.8).

ADDITIONAL INFORMATION

Note STRICTLY FOR FURTHER SCIENTIFIC RESEARCH USE ONLY (RUO). MUST NOT TO BE USED IN DIAGNOSTIC OR THERAPEUTIC APPLICATIONS.



Western blot analysis of various lysates using PAM16 Rabbit pAb (STJ111917) at 1:1000 dilution.

Secondary antibody: HRP-conjugated Goat anti-Rabbit IgG (H+L) (STJS000856) at 1:10000 dilution.

Lysates/proteins: 25 µg per lane.

Blocking buffer: 3% nonfat dry milk in TBST.

Detection: ECL Basic Kit

Exposure time: 90s.