

Anti-MRPS16 antibody (1-137) (STJ111916)

GENERAL INFORMATION

Product Type	Primary antibodies
Applications	WB/IF/ICC/ELISA
Host / Source	Rabbit
Reactivity	Human/Mouse/Rat

PRODUCT PROPERTIES

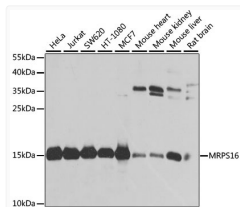
Clonality	Polyclonal
Concentration	Lot specific
Conjugation	Unconjugated
Purification	Affinity purification
Dilution Range	WB:1:500-1:2000 IF/CC:1:50-1:200 ELISA:Recommended starting concentration is 1 μ g/mL. Please optimize the concentration based on your specific assay requirements.
Formulation	PBS with 0.02% Sodium Azide, 50% Glycerol, pH 7.3.
Isotype	IgG
Molecular Weight	Protein Mw: 15kDa Observed Mw: 15kDa
Storage Instruction	Store at -20°C for up to 1 year from the date of receipt, and avoid repeat freeze-thaw cycles.

TARGET INFORMATION

Gene ID	51021
Gene Symbol	MRPS16
UniProt ID	RT16_HUMAN
Immunogen Region	1-137
Immunogen Sequence	MVHLLTLLCKAYRGGHLLTIR LALGGCTNRPFYRIVA AHNK CPRDGRFVEQLGSYDPLPNS HGEKLVALNLDRI RHWIGCG AHLKSPMEKLLGLAGFFPLH PMMITNAERLRRKRAREVLL ASQKTD AEA TDEATET
Specificity	Recombinant fusion protein containing a sequence corresponding to amino acids 1-137 of human MRPS16 (NP_057149.1).

ADDITIONAL INFORMATION

Note **STRICTLY FOR FURTHER SCIENTIFIC RESEARCH USE ONLY (RUO). MUST NOT TO BE USED IN DIAGNOSTIC OR THERAPEUTIC APPLICATIONS.**



Western blot analysis of various lysates using MRPS16 Rabbit pAb (STJ111916) at 1:1000 dilution.

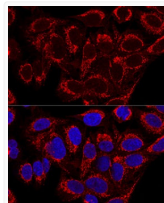
Secondary antibody: HRP-conjugated Goat anti-Rabbit IgG (H+L) (STJS000856) at 1:10000 dilution.

Lysates/proteins: 25 μ g per lane.

Blocking buffer: 3% nonfat dry milk in TBST.

Detection: ECL Basic Kit

Exposure time: 10s.



Confocal immunofluorescence analysis of U2OS cells using MRPS16 Rabbit pAb (STJ111916) at dilution of 1:100. Blue: DAPI for nuclear staining.