

Anti-ZFPM2 antibody (982-1151) (STJ111910)

GENERAL INFORMATION

Product Type	Primary antibodies
Applications	WB/ELISA
Host / Source	Rabbit
Reactivity	Human/Mouse

PRODUCT PROPERTIES

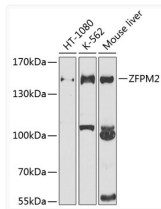
Clonality	Polyclonal
Concentration	Lot specific
Conjugation	Unconjugated
Purification	Affinity purification
Dilution Range	WB:1:500-1:2000 ELISA:Recommended starting concentration is 1 Mu g/mL. Please optimize the concentration based on your specific assay requirements.
Formulation	PBS with 0.02% Sodium Azide, 50% Glycerol, pH 7.3.
Isotype	IgG
Molecular Weight	Protein Mw: 128kDa Observed Mw: 150kDa
Storage Instruction	Store at -20°C for up to 1 year from the date of receipt, and avoid repeat freeze-thaw cycles.

TARGET INFORMATION

Gene ID	23414
Gene Symbol	ZFPM2
UniProt ID	FOG2_HUMAN
Immunogen Region	982-1151
Immunogen Sequence	SPYYGIKPSDYISGSLVIHN TDIEQSRNAENESPKGQASS NGCAALKKDSLPLLPKNRGM VIVNGGLKQDERPAANPQQE NISQNPQHEDDHKSPSWISE NPLAANENVSPGIPSAEEQL SSIAKGVNGSSQAPTSGKYC RLCDIQFNLSNFITHKKFY CSSHAAEHVK
Specificity	Recombinant fusion protein containing a sequence corresponding to amino acids 982-1151 of human ZFPM2 (NP_036214.2).

ADDITIONAL INFORMATION

Note STRICTLY FOR FURTHER SCIENTIFIC RESEARCH USE ONLY (RUO). MUST NOT TO BE USED IN DIAGNOSTIC OR THERAPEUTIC APPLICATIONS.



Western blot analysis of various lysates using ZFPM2 Rabbit pAb (STJ111910) at 1:1000 dilution.

Secondary antibody: HRP-conjugated Goat anti-Rabbit IgG (H+L) (STJS000856) at 1:10000 dilution.

Lysates/proteins: 25 Mu g per lane.
 Blocking buffer: 3% nonfat dry milk in TBST.
 Detection: ECL Basic Kit
 Exposure time: 40s.