

Anti-CAPN10 antibody (1-230) (STJ111907)

GENERAL INFORMATION

| | |
|---------------|--------------------|
| Product Type | Primary antibodies |
| Applications | WB/ELISA |
| Host / Source | Rabbit |
| Reactivity | Human |

PRODUCT PROPERTIES

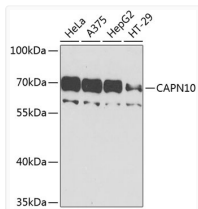
| | |
|---------------------|---|
| Clonality | Polyclonal |
| Concentration | Lot specific |
| Conjugation | Unconjugated |
| Purification | Affinity purification |
| Dilution Range | WB:1:1000-1:4000 ELISA:Recommended starting concentration is 1 µg/mL. Please optimize the concentration based on your specific assay requirements. |
| Formulation | PBS with 0.02% Sodium Azide, 50% Glycerol, pH 7.3. |
| Isotype | IgG |
| Molecular Weight | Protein Mw: 75kDa Observed Mw: 68kDa |
| Storage Instruction | Store at -20°C for up to 1 year from the date of receipt, and avoid repeat freeze-thaw cycles. |

TARGET INFORMATION

| | |
|--------------------|--|
| Gene ID | 11132 |
| Gene Symbol | CAPN10 |
| UniProt ID | CAN10_HUMAN |
| Immunogen Region | 1-230 |
| Immunogen Sequence | MRAGRGATPARELFRDAAFP AADSSLFCDLSTPLAQFRED ITWRRPQEICATPRLFPDDP REGQVKQGLLGDCWFLCACALQKSRHLLDQVIPPQPSW ADQEYRGSFTCRIWQFGRWV EVTDDRLPCLAGRLCFSRC QREDVFWLPLEKVYAKVHG SYEHLWAGQVADALVDLTGG LAERWNLKGVAGSGGQDRP GRWEHRTCRQLLHLKDQCLI SCCVLSPRAG |
| Specificity | Recombinant fusion protein containing a sequence corresponding to amino acids 1-230 of human CAPN10 (NP_075571.1). |

ADDITIONAL INFORMATION

Note **STRICTLY FOR FURTHER SCIENTIFIC RESEARCH USE ONLY (RUO). MUST NOT TO BE USED IN DIAGNOSTIC OR THERAPEUTIC APPLICATIONS.**



Western blot analysis of various lysates using CAPN10 Rabbit pAb (STJ111907) at 1:1000 dilution.

Secondary antibody: HRP-conjugated Goat anti-Rabbit IgG (H+L) (STJS000856) at 1:10000 dilution.

Lysates/proteins: 25 µg per lane.

Blocking buffer: 3% nonfat dry milk in TBST.

Detection: ECL Basic Kit

Exposure time: 90s.